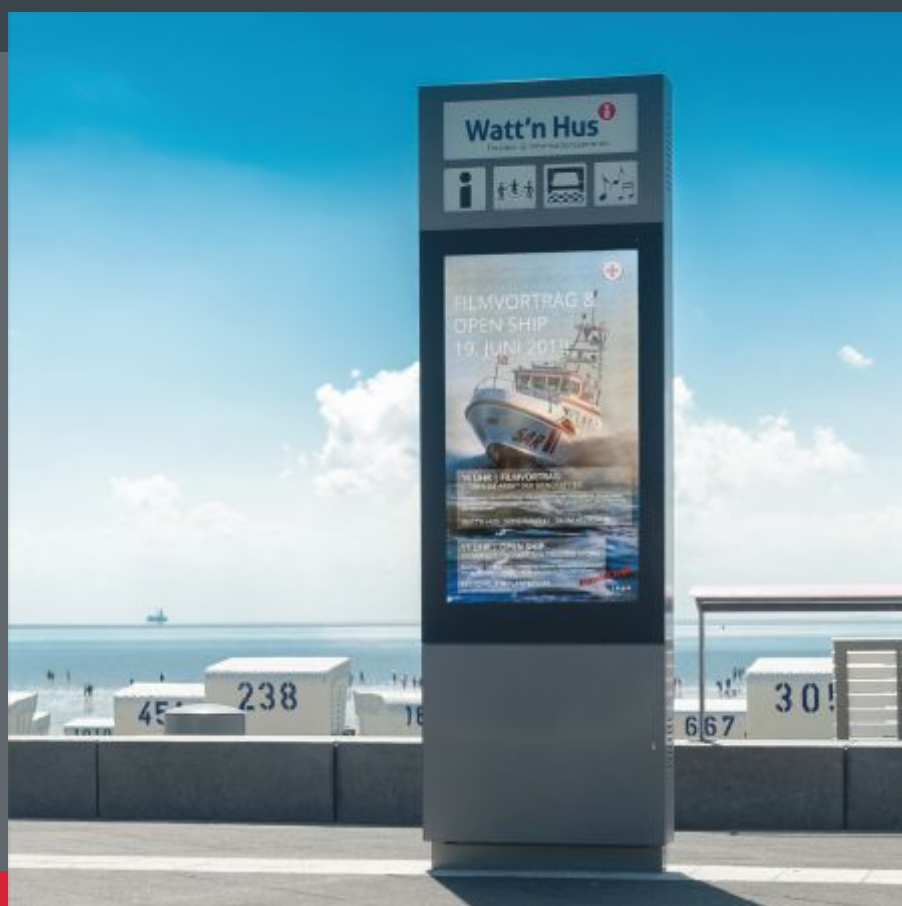


# e.VITRUM®

DIGITAL SIGNAGE  
OUTDOOR + INDOOR

EDITION 6.0



Information and advertising - digital and interactive

ST-VITRINEN TRAUTMANN





EV 21



EV 22

- EV 21  
Public Display 55" - Portrait
- EV 22  
Public Displays 55" - Portrait as storefront application
- EV 23  
Monitor-Totem 75" - Portrait with cut out design elements and LED bar with waterfall effect.



EV 23



EV 31



EV 32

- EV 31  
Interactively available real estate offers via 55" monitor with touch function
- EV 32  
Multi-touch wayfinding system in a shopping mall
- EV 33  
46" monitor with touch function TIM - Graz



EV 33

## e.VITRUM® OUTDOOR+INDOOR

The monitor solutions of the range e.VITRUM® are available in the sizes 46" to 85" for indoor as well as outdoor use. You can choose between portrait and landscape format, wall mounting or freestanding totems. After several years of research and testing our systems meet the highest demands. We guarantee a trouble-free and low-maintenance operation and simultaneously very quiet external noise and slim, elegant housing forms at sub-zero temperatures and direct sunlight.



EV 25



EV 34

## e.VITRUM® INTERACTIVE

With our newly developed product line e.Vitrum®-INTERACTIVE we open up a new dimension in the DooH market. Passersby are not passive viewers anymore, but control themselves what is displayed. Even a combination with gaming software is possible and combines the advertising message with an emotional sense of achievement.

Information that previously had only been displayed passively becomes operable. Subway maps can be zoomed, real estate offers displayed and product listings scrolled. While still outside the customer can learn about what to expect inside.



EV 26

- EV 25  
Digital showcase 55" in landscape-format
- EV 26  
Screen-mile 46" Landscape inclined to the viewer at 15° and integrated into a niche

- EV 34  
75" monitor with interactive software, controlled by motion capture and a multi-touch user interface
- EV 35  
Passenger information system with an interactive touchscreen solution



EV 35





# CONTENT

PRODUCT HIGHLIGHTS	6
PRODUCT OVERVIEW	8
OUTDOOR	10
INDOOR	22
SOFT- AND HARDWARE	26
PROJECTS & REFERENCES	28

### Highest quality in every detail

The use of high-quality components guarantees a maximum service life and unmatched longevity. Our systems operate flawless under difficult weather or environmental conditions – 24 hours a day. This is proven by numerous installations in demanding locations, such as altitudes above 2000 meters in the Alps or on the first coastline on the North and Baltic coasts.

A revision-friendly design of all systems ensures that every single component is accessible and can be serviced regularly with little effort. Stable doors in the base area, hinged front elements and swiveling monitor suspensions inside allow quick access even in the smallest spaces. If indeed one component fails, it can be replaced with a new component in no time.

The entire frame construction is designed for maximum security. All statically relevant components made of steel or aluminum are manufactured in compliance with the requirements of DIN EN 1090 and guarantee great stability for all possible load cases. Glazing with laminated safety glass (VSG) reduces the risk of damage to people if the glass breaks. Security locks and all-round gear locks lock the housing safely and protect against vandalism and unauthorized access.

### Optional Extensions

	TOUCH-SCREEN		FREE CHOICE OF COLOURS
	BRIGHTNESS CONTROL		CAMERA (USB / IP)
	WLAN MODULE		MICROPHONE
	3G/4G/5G MODULE		SPEAKER
	NEARFIELD-COMMUNICATION		DEFIBRILLATOR
	ANTI-GRAFFITI		ANTI-FINGERPRINT

A brilliant, detailed picture with monitors from 46 to 85 inches in Full-HD or 4K resolution.

Readable in direct sunlight thanks to brightness up to 7000 nits and anti-glare glass with UV and IR protection.

Ceramic passepartout print on the inside of the front.

Intuitively operated touch elements via an optional 40-point multi-touch surface.

Openable glass casement frames for revision work, either as folding or rotating sash, dependent of the model.

Locked base area as storage space for all electronic components, control devices and connections.

Reliable 24/7 operation in the temperature range from -33 ° to + 40 ° C thanks to powerful air-cooling systems and integrated heating elements.

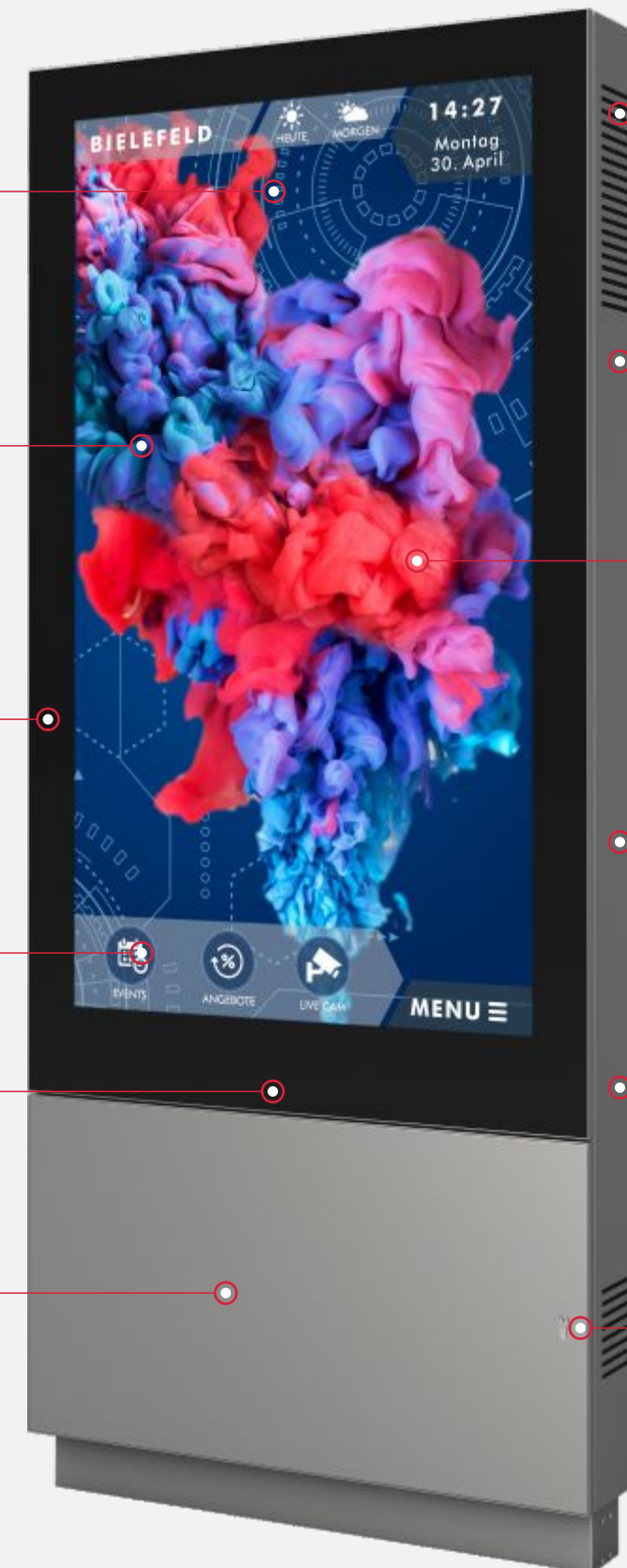
Aluminum housing in all RAL, special and anodized colors available.

Splinter-binding laminated safety glass (VSG) in the front with a thickness of 9.14 mm.

Housing construction with certified shock resistance - 2xIK 10.

All statically relevant aluminum and steel components are made according to the specifications of DIN EN 1090.

Socket door with a flush built-in security lock with a profile cylinder, optionally positioned on the narrow side.





### Dear customers,

In this catalog, we present our digital product range in its 5th edition. These monitors and displays from ST-DIGITAL target customers with exciting pictures and information that can be updated in a matter of seconds. Extra sturdy devices are especially designed for use in the outdoor or semi-outdoor area. They have no problems with difficult light or temperature conditions and are ideally suited for display windows, shopping centers, and pedestrian areas.

Our displays can be used for a wide range of applications. Impress your customers with professionally placed information, pictures and films. Use these displays to guide visitors or to provide currently relevant data. Additionally, you can design foyers or use video walls to effectively present your company in the outdoor area of your company headquarters. We offer the right display solution for absolutely every application and building environment.

In today's world, information needs to be available at a moment's notice. With digital products, we improve and replace traditional forms of customer engagement such as posters and notices. The digital elements of the e.VITRUM series bring the information directly to the point of sale. They also impress with a brilliant display quality while creating a modern, attractive ambience.

*Your ST-Digital-Team*

### ST-Vitrinen goes ST-Digital

As ST-VITRINEN Trautmann GmbH & Co KG, we have been offering a comprehensive portfolio of showcases, advertising clocks and displays systems since 1969. We have developed into one of the leading suppliers in this market segment and we are proud that our products have been used in cities, museums, railway stations, airports, and many other places around the world for decades. Following the trend of times, we realized early on that typical out-of-home advertising is getting removed and that more and more dynamic,

animated and rapidly updatable advertising content will be required. The technical progress of monitors has enabled us to develop technically superior advertising systems on a digital basis and to bring them onto the market.

Since the required technical know-how, production and quality are considerably greater for digital systems, we have established our own business division under which all development, production and sales processes are coordinated.

In our external presentation, this business division is being communicated under the brand name ST-DIGITAL as a self-sustaining brand in order to separate the digital, electronic product segment from the classic, analog portfolio.

With ST-DIGITAL products, you will get a solution that meet the highest standards in technology and design. Everything is developed and manufactured at our location in Bielefeld and guaranteed "made-in-Germany"



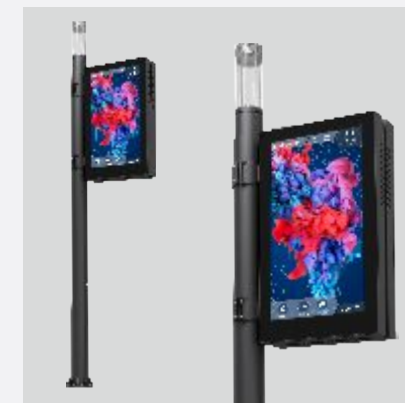
**TOTEM OUTDOOR** Page 10



**FREESTANDING OUTDOOR** Page 14



**WALL OUTDOOR** Page 16



**POLESCREEN OUTDOOR** Page 18



**DESKSCREEN SEMI-OUTDOOR** Page 19



**DIGITAL SHOWCASE OUTDOOR** Page 20



**TOTEM INDOOR** Page 22



**STOREFRONT INDOOR** Page 24



**SOFTWARE + PLAYER-PC** Page 26



**ST-monitor-totem in portrait format  
for outdoor applications**

Digital information can be displayed professionally at any location.

A special LCD-display is being used which is protected by an anti-glare glass front with a UV+IR-blocking filter. This ensures excellent readability even in direct sunlight. Optionally the system can be delivered with a multi-touch-enabled glass surface.

A ventilation and heating system – which was developed in-house – allows safe operation in environments with extreme weather conditions, e.g. ski resorts with high temperature fluctuations or railway platforms and production facilities with exposure to dust and heat.

The totem is manufactured with extruded aluminium hollow section profiles and available in almost any RAL-colour as well as any colour achievable through anodization of aluminium.

MODEL	46 P 111	55 P 111	65 P 111	75 P 111	85 P 111
panel	46 inch LCD	55 inch LCD	65 inch LCD	75 inch LCD	85 inch LCD
resolution	1080 × 1920 pixel	1080 × 1920 pixel	1080 × 1920 pixel	2160 × 3840pixel	2160 × 3840 pixel
visible size of monitor W×H	573 × 1018 mm	681 × 1210 mm	808 × 1433 mm	930 × 1652 mm	1057× 1876 mm
brightness	2500 nit	2500   3500   5500   7000 nit	2500 nit	3000 nit	4000 nit
temperature range	-33 bis +40 °C	-33 bis +40 °C	-33 bis +40 °C	-33 bis +40 °C	-33 bis +50 °C
temperature control	cooling and heating system	cooling and heating system	cooling and heating system	cooling and heating system	cooling and heating system
glass with UV+IR protection	VSG 9,14 mm - anti-glare	VSG 9,14 mm - anti-glare	VSG 9,14 mm - anti-glare	VSG 9,14 mm - anti-glare	VSG 9,14 mm - Optiwhite
dimensions W×H×D	753 × 2050 × 205 mm	861 × 2245 × 205 mm	988 × 2323 × 220 mm	1130× 2552 × 220 mm	1257 × 2846 × 220mm

All models are also available in a double-sided variation (Depth D = 298 mm)





ST-monitor-totem in landscape format for outdoor applications

Wherever information needs to be displayed individually adjustable and focused on a particular target group, monitor displays are the optimal medium

of communication. Individual sales messages as well as text or picture information can be transmitted flexibly and rendered visible immediately.

The landscape format is especially suited to convey customer information via video clips. Touch screen functionality is optionally available.



MODEL	46 L 111	55 L 111	65 L 111	75 L 111	85 L 111
panel	46 inch LCD	55 inch LCD	65 inch LCD	75 inch LCD	85 inch LCD
resolution	1920 × 1080 pixel	1920 × 1080 pixel	1920 × 1080 pixel	3840 × 2160 pixel	3840 × 2160 pixel
visible size of monitor W×H	1018 × 573 mm	1210 × 681 mm	1433 × 808 mm	1652 × 930 mm	1876 × 1057 mm
brightness	2500 nit	2500   3500   5500   7000 nit	2500 nit	3000 nit	4000 nit
temperature range	-33 bis +40 °C	-33 bis +40 °C	-33 bis +40 °C	-33 bis +40 °C	-33 bis +50 °C
temperature control	cooling and heating system	cooling and heating system	cooling and heating system	cooling and heating system	cooling and heating system
glass with UV+IR protection	VSG 9,14 mm - anti-glare	VSG 9,14 mm - anti-glare	VSG 9,14 mm - anti-glare	VSG 9,14 mm - anti-glare	VSG 9,14 mm - Optiwhite
dimensions W×H×D	1198 × 1926 × 205 mm	1390 × 1980 × 205 mm	1613 × 2044 × 220 mm	1852 × 2115 × 220 mm	2076 × 2178 × 220 mm

All models are also available in a double-sided variation (Depth D = 298 mm)





Freestanding ST-monitor in portrait format

As a variant of the outdoor totems, we offer our monitor solutions as free-standing displays with legs. This way you have an additional design possibility to integrate your digital content into the

environment. The entire electronics and ventilation technology is integrated into the monitor housing without any restriction of functionality or operational safety.



MODEL	46 P 121	55 P 121	65 P 121	75 P 121	85 P 121
panel	46 inch LCD	55 inch LCD	65 inch LCD	75 inch LCD	85 inch LCD
resolution	1080 × 1920 pixel	1080 × 1920 pixel	1080 × 1920 pixel	2160 × 3840 pixel	2160 × 3840 pixel
visible size of monitor W×H	573 × 1018 mm	681 × 1210 mm	808 × 1433 mm	930 × 1652 mm	1057 × 1876mm
brightness	2500 nit	2500   3500   5500   7000 nit	2500 nit	3000 nit	4000 nit
temperature range	-33 bis +40 °C	-33 bis +40 °C	-33 bis +40 °C	-33 bis +40 °C	-33 bis +40 °C
temperature control	cooling and heating system	cooling and heating system	cooling and heating system	cooling and heating system	cooling and heating system
glass with UV+IR protection	VSG 9,14 mm - anti-glare	VSG 9,14 mm - anti-glare	VSG 9,14 mm - anti-glare	VSG 9,14 mm - anti-glare	VSG 9,14 mm - Optiwhite
dimensions W×H <sub>display</sub> /H <sub>total</sub> ×W	753×1250/2050×220 mm	861×1445/2245×220 mm	988×1668/2323×220 mm	1130×1897/2552×220 mm	1257×2121/2846×298 mm



Freestanding ST-monitor in landscape format

For use with the widespread TV landscape format in the outdoor segment, we offer the freestanding models with legs in the popular landscape format as well. No matter which model you choose, you will always receive a product of the highest quality possible for outdoor use.



MODEL	46 L 121	55 L 121	65 L 121	75 L 121	85 L 121
panel	46 inch LCD	55 inch LCD	65 inch LCD	75 inch LCD	85 inch LCD
resolution	1920 × 1080 pixel	1920 × 1080 pixel	1920 × 1080 pixel	3840 × 2160 pixel	3840 × 2160 pixel
visible size of monitor W×H	1018 × 573 mm	1210 × 681 mm	1433 × 808 mm	1652 × 930 mm	1876 × 1057 mm
brightness	2500 nit	2500   3500   5500   7000 nit	2500 nit	3000 nit	4000 nit
temperature range	-33 bis +40 °C	-33 bis +40 °C	-33 bis +40 °C	-33 bis +40 °C	-33 bis +40 °C
temperature control	cooling and heating system	cooling and heating system	cooling and heating system	cooling and heating system	cooling and heating system
glass with UV+IR protection	VSG 9,14 mm - anti-glare	VSG 9,14 mm - anti-glare	VSG 9,14 mm - anti-glare	VSG 9,14 mm - anti-glare	VSG 9,14 mm - Optiwhite
dimensions W×H <sub>display</sub> /H <sub>total</sub> ×W	1198×808/1926×220 mm	1390×916/1980×220 mm	1613×1043/2044×220 mm	1852×1175/2115×220 mm	2076×1302/2178×298 mm





ST-monitor in portrait format  
for outdoor applications

Through audiovisual stimuli, digital signage opens up many new possibilities to draw customers' attention to products, bargains and promotions.

With e.Vitrum solutions for outdoor applications your visitors or customers are informed about your current offerings – even before entering your building.

The customers' level of attention can be increased through optional audio support. This is enabled by integrated, (almost) invisible surface sound speakers. The volume is automatically attuned to the ambient noise level.



ST-monitor in landscape format  
for outdoor applications

ST-monitors are available for on-the-wall installations as well as recess integration. Depending on special requirements of a particular installation spot, it is possible to tilt the system towards the spectator. This increases the readability of the displayed information, especially when the monitor is placed above eye level. The landscape format is especially suitable for presenting customer information via video clips and film segments. Optionally the system can be equipped with a multi-touch surface.

MODEL	46 P 131	55 P 131	65 P 131	75 P 131	85 P 131
panel	46 inch LCD	55 inch LCD	65 inch LCD	75 inch LCD	85 inch LCD
resolution	1080 × 1920 pixel	1080 × 1920 pixel	1080 × 1920 pixel	2160 × 3840 pixel	2160 × 3840 pixel
visible size of monitor W×H	573 × 1018 mm	681 × 1210 mm	808 × 1433 mm	930 × 1652 mm	1057 × 1876 mm
brightness	2500 nit	2500   3500   5500 nit	2500 nit	3000 nit	4000 nit
temperature range	-33 bis +40 °C	-33 bis +40 °C	-33 bis +40 °C	-33 bis +40 °C	-33 bis +40 °C
temperature control	cooling and heating system	cooling and heating system	cooling and heating system	cooling and heating system	cooling and heating system
glass with UV+IR protection	VSG 9,14 mm - anti-glare	VSG 9,14 mm - anti-glare	VSG 9,14 mm - anti-glare	VSG 9,14 mm - anti-glare	VSG 9,14 mm - Optiwhite
dimensions W×H <sub>display</sub> /H <sub>total</sub> ×W	753 × 1250 × 195 mm	861 × 1445 × 195 mm	988 × 1668 × 195 mm	1130 × 1897 × 195 mm	1257 × 2121 × 275 mm

MODEL	46 L 131	55 L 131	65 L 131	75 L 131	85 L 131
panel	46 inch LCD	55 inch LCD	65 inch LCD	75 inch LCD	85 inch LCD
resolution	1920 × 1080 pixel	1920 × 1080 pixel	1920 × 1080 pixel	3840 × 2160 pixel	3840 × 2160 pixel
visible size of monitor W×H	1018 × 573 mm	1210 × 681 mm	1433 × 808 mm	1652 × 930 mm	1876 × 1057 mm
brightness	2500 nit	2500   3500   5500 nit	2500 nit	3000 nit	4000 nit
temperature range	-33 bis +40 °C	-33 bis +40 °C	-33 bis +40 °C	-33 bis +40 °C	-33 bis +40 °C
temperature control	cooling and heating system	cooling and heating system	cooling and heating system	cooling and heating system	cooling and heating system
glass with UV+IR protection	VSG 9,14 mm - anti-glare	VSG 9,14 mm - anti-glare	VSG 9,14 mm - anti-glare	VSG 9,14 mm - anti-glare	VSG 9,14 mm - Optiwhite
dimensions W×H <sub>display</sub> /H <sub>total</sub> ×W	1198 × 808 × 195 mm	1390 × 916 × 195 mm	1613 × 1043 × 195 mm	1852 × 1175 × 195 mm	2076 × 1302 × 275 mm



POLESCREEN - Portrait monitor on a vertical mast

The LED Street-Light illuminates the sidewalk both efficiently and brilliantly. At the same time, the monitor placed on the side provides information and eye-catching advertising for the passers-by. POLESCREEN is combined in an innovative way and always placed perfectly! It provides the required lighting for urban environments and is supplemented with our digital signage

know-how to create something new for the modern city. POLESCREEN is ideally suited for illuminating event locations, public places or usable as a modern street lighting with space for digital information.

All single- and double-sided variations are manufactured with our newly designed multi-frame profile.



MODEL	55 P 171	65 P 171
panel	55 inch LCD	65 inch LCD
resolution	1080 × 1920 Pixel	1080 × 1920 Pixel
visible size of monitor W×H	681 × 1210 mm	808 × 1433 mm
brightness	2500   3500   5500   7000 nit	2500 nit
temperature range	-33 bis +40 °C	-33 bis +40 °C
temperature control	cooling and heating system	cooling and heating system
glass with UV+IR protection	VSG 9,14 mm - anti-glare	VSG 9,14 mm - anti-glare
monitor dimensions W×H×D	861 × 1447 × 220 mm	988 × 1670 × 220 mm
pole dimensions H   Ø	4781 mm   Ø 219 mm	4781 mm   Ø 219 mm

All models are also available in a double-sided variation (Depth D = 298 mm)

DESKSCREEN - Barrier-free desk showcase with a monitor in landscape format

Barrier-free information can be displayed and retrieved 24/7. The special LCD monitor is easy to read and protected in bright sunlight

thanks to an anti-glare glass front with UV and IR filters. People with disabilities can read and zoom into all the information via the multi-

touch function. The design of the construction is optimized to be easily accessible for everyone, including wheelchair users.



MODEL	55 L 361
panel	55 inch LCD
resolution	1920 × 1080 pixel
visible size of monitor W×H	1210 × 681 mm
brightness	700   2500 nit
temperature range	-5 bis +40 °C
temperature control	cooling and heating system
glass with UV+IR protection	VSG 9,14 mm - anti-glare
dimensions W×H×D	1370 × 1177 × 875 mm



Digital showcase for outdoor applications

Save the time and effort you put into printing and changing posters – present your content in a modern and attractive way with the new ST-DIGITAL showcase.

With our new product, you use a classic information platform for customers, members or visitors in an innovative, digital dimension.

Switching to a digital system is especially useful if information or advertisements need to be updated frequently.



MODEL

55 L 341

55 P 341

panel

55 inch LCD

55 inch LCD

resolution

1920 × 1080 pixel

1080 × 1920 pixel

visible size of monitor  
W×H

1210 × 681 mm

681 × 1210 mm

brightness

700 nit

700 nit

temperature range

-10 bis +30 °C

-10 bis +30 °C

temperature control

cooling and heating system

cooling and heating system

glass  
with UV+IR protection

VSG 9,14 mm

VSG 9,14 mm

dimensions  
W×H<sub>display</sub>/H<sub>total</sub>×D

1390 × 915/1900 × 125 mm

861 × 1445/2100 × 125 mm



Start into a digital future

With the digitalization of media portfolios via HD screens, entirely new opportunities are created for businesses to present their entire product range with one medium directly at the point-of-sale.

Premium quality monitors are integrated into an elegant totem. The glass front is available with a ceramic print in virtually any colour. The glass front's gloss gives the totem a particular shine and a premium look. An invisible locking mechanism and concealed hinges emphasize attention to detail and a high level of quality.



MODEL	55 P 211	65 P 211	75 P 211
panel	55 inch LCD	65 inch LCD	75 inch LCD
resolution	2160 × 3840 Pixel	2160 × 3840 Pixel	2160 × 3840 Pixel
visible size of monitor W×H	681 × 1210 mm	808 × 1433 mm	930 × 1652 mm
brightness	700 nit	700 nit	700 nit
glass	ESG 6 mm - Optiwhite	ESG 6 mm - Optiwhite	ESG 6 mm - Optiwhite
dimensions W×H	820 × 1990 mm	950 × 2100 mm	1070 × 2350 mm

Starting dialogs

Digital advertisements may as well be just entertaining and lead the viewer onto a diverse journey through our world.

The technological possibilities become more and more efficient. Guidance systems navigate us through shopping malls, the newest products are displayed and touch screen systems enable us to access information.

MODEL	55 L 211
panel	55 inch LCD
resolution	3840 × 2160 pixel
visible size of monitor W×H	1210 × 681 mm
brightness	700 nit
glass	ESG 6 mm - Optiwhite
dimensions W×H	1390 × 1990 mm





Storefront-systems for a digital store window

No more pale pictures and barely readable content! Improve your showcase design with appealing animations on our highbright displays.

Current promotions and special offers can be animated and move the passers-by attention to your products. The extremely high brightness and brilliance

of the displays guarantee a perfect presentation of your advertising message even under direct sunlight or other intensive lighting!



MODEL	46 P 451	46 P 452	55 P 421	55 P 422
panel	46 inch LCD	2 × 46 inch LCD	55 inch LCD	2 × 55 inch LCD
resolution	1080 × 1920 Pixel	1080 × 1920 Pixel	1080 × 1920 Pixel	1080 × 1920 Pixel
visible size of monitor W×H	577 × 1022 mm	577 × 1022 mm	680 × 1210 mm	680 × 1210 mm
brightness	4000 nit	3000 / 1000 nit	4000 nit	3000 / 1000 nit
dimensions W×H×D	1062 × 617 × 55 mm	1108 × 619 × 70 mm	1255 × 725 × 55 mm	1299 × 727 × 70 mm

Digital customer stopper

STOPPERSCREEN informs your customers right on the sidewalk in front of your shop. Advertise current sales and update them within seconds. Moving video content generates significantly more attention than classic poster advertising. The elegant all-glass design of our STOPSCREEN models underlines the high quality of your own shop and your offers.

The digital customer stoppers have smooth-running castors which makes them easily moveable and only require a common power connection. A bright monitor with 700 nit guarantees a brilliant picture and ideal readability of all content.



MODEL	43 P 361	49 P 361
panel	43 inch LCD	49 inch LCD
resolution	2160 × 3840 pixel	2160 × 3840 pixel
visible size of monitor W×H	535 × 946 mm	609 × 1078 mm
brightness	700 nit	700 nit
temperature range	-10 bis +30 °C	-10 bis +30 °C
dimensions W×H×D	675 × 1360 × 63 mm	749 × 1492 × 63 mm

### CONTROL YOUR SCREEN

Our sophisticated, user-friendly content management software is designed for the operation of our outdoor and indoor product line e.VITRUM. The software enables the user to control and survey his digital content centrally.

You are in control of all networked monitors and can coordinate the presentation of your individually compiled data or advertising content.



### SOFTWARE KEY FACTS

#### Freedom of layout

The software helps you design your layout easily and without limitations. You are not bound to predetermined layouts or templates. Nevertheless, you have a great variety of predefined layouts for free use at your disposal.

Individual layouts that have already been designed can be saved and re-used or edited if necessary.

The display area is divisible in many segments. Different types of content can be presented separately on one screen at the same time.

You can decide whether you want to present single layout segments of a website, interactive elements or play videos or music.

There are no limits to creativity and ideas!

#### Intuitive operation

The great advantage of the content management software lies in the easy and intuitive to operate user interface. If you are familiar with other windows software you will very quickly learn to use this one efficiently.

#### A quick training guarantees immediate

#### ariety of formats

All common media formats can be used in your playlist without conversion. Websites, Flash-files and PowerPoint presentations (no licence required) can be presented as well as all common picture and video formats. We are pleased to send you a list of all supported file formats on request.

Immediately playable content, without time-consuming conversion of formats.

#### Easy maintenance and installation

The installation of the software on client computers usually does not take longer than 30 minutes. An easy to operate installation routine supports you in integrating the software into your network where upcoming updates and software upgrades can be run safely and without complications.

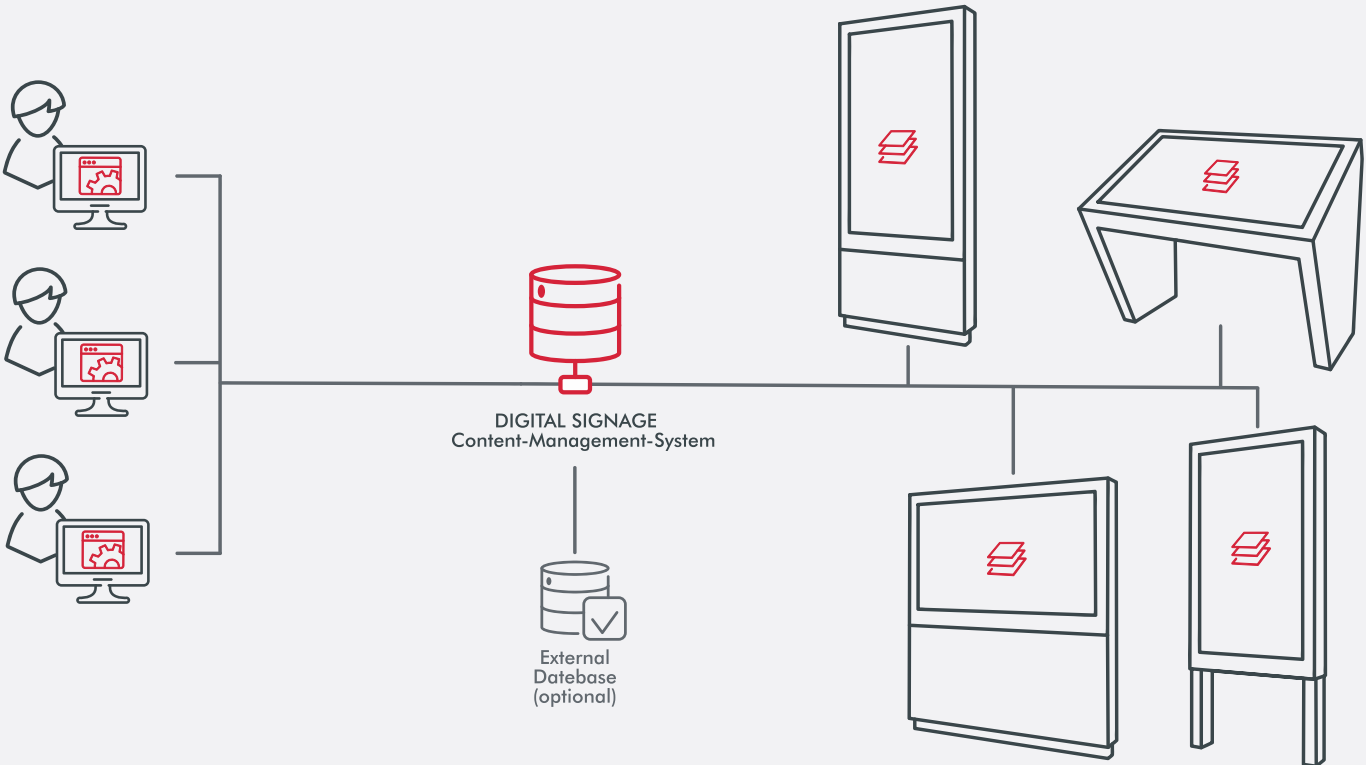
#### Safe system integration and easy software updates.

#### Log function

All layout and status information of every point-of-visualisation is being logged and saved to use the data, for instance, as a basis for accounting or service.

Review and documentation are possible at any time.

### Hardware and system architecture



A **content management software** runs on a notebook or PC, centrally managing and preparing the displayed content. The software is versatile and configurable. The structure may be extended, arranged as needed and organized in folders and subgroups.

A **server** is responsible for the data storage. It sends the current content at configurable intervals to a media player PC.

The **media player PC** is integrated into the monitor totem or monitor case respectively and presents the content on the displays.

#### PLAYER-PC

##### dimensions LxWxH

117 × 112 × 36 mm

##### CPU

Quad-Core i5 / up to 3,80 GHz

##### GPU

Intel Iris Plus Graphics 655

##### network connection

Gigabit LAN | 802.11ac WLAN | v5.0 Bluetooth

##### SSD

500 GB M.2

##### memory

8GB DDR4 SO-DIMM

##### interfaces

4 × USB 3.1  
1 × HDMI 2.0  
1 × Thunderbolt 3 supports  
USB 3.1 Gen.2 and DisplayPort 1.2





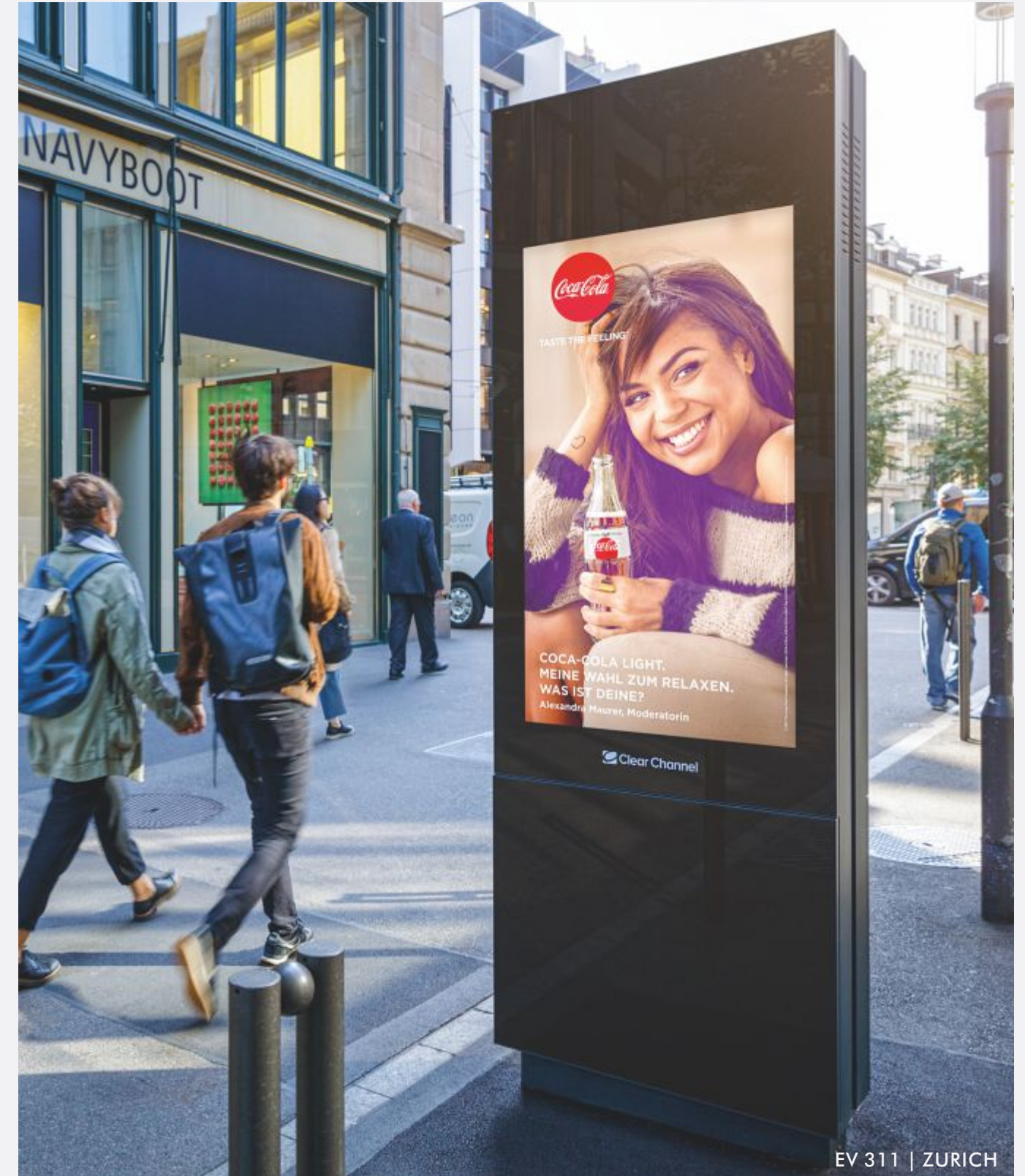


EV 281 | BEACH PROMENADE BÜSUM

## PROJECTS & REFERENCES



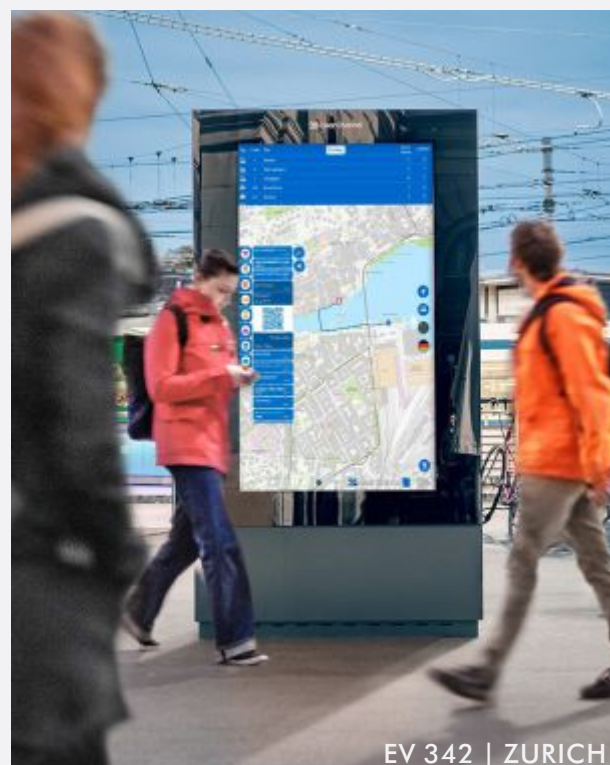








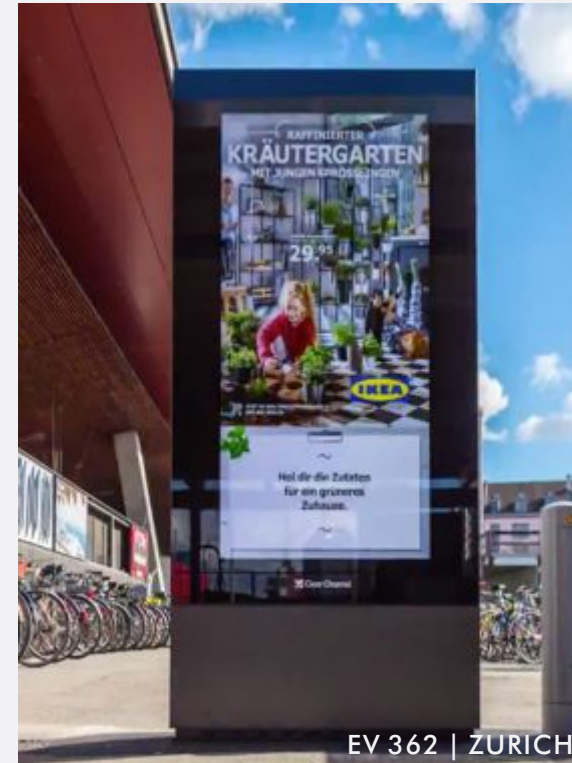




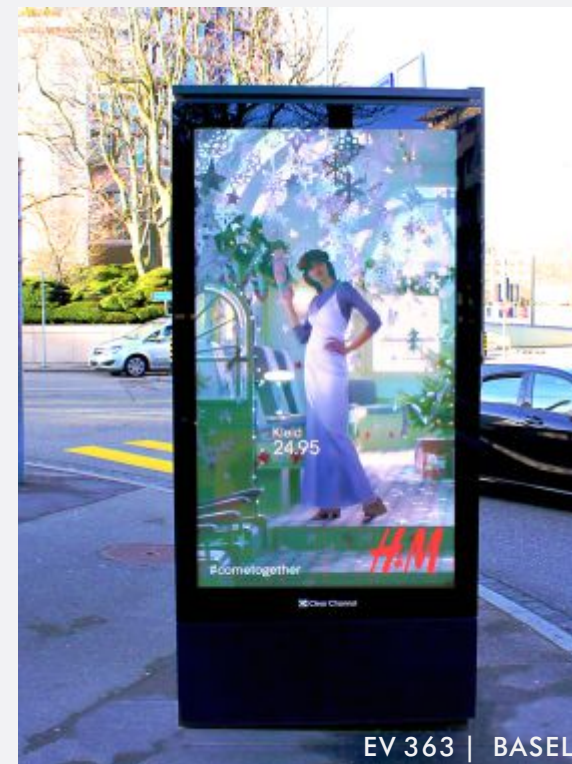




EV 361 | HÖVELHOF



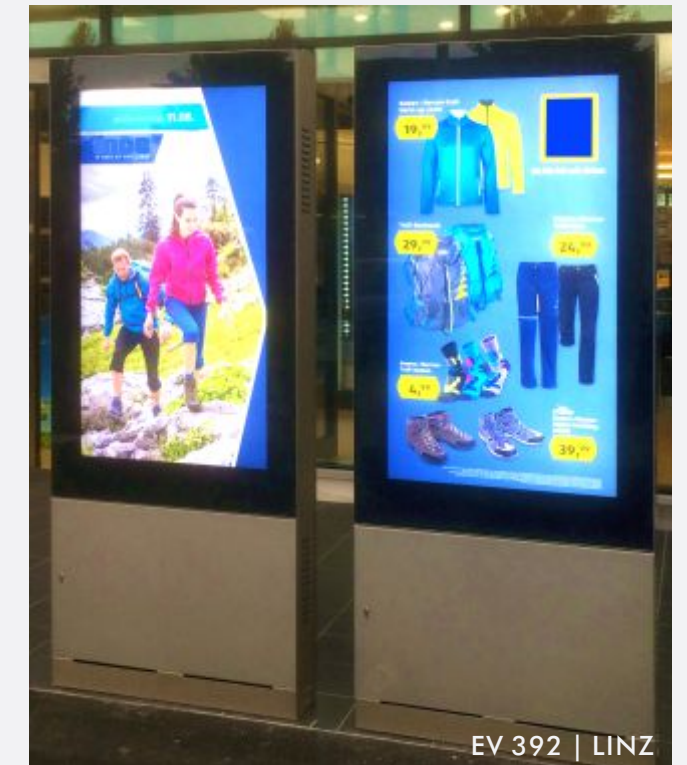
EV 362 | ZÜRICH



EV 363 | BASEL















EV 421 | e.VITRUM QUADRO

#### e.VITRUM - QUADRO

The “pinnacle” of our digital signage projects is located in the middle of the skiing area of the Austrian region Obertauern, at a height of about 2,000

metres above sea level. The Krings Alm shows events and live pictures from the restaurant and the après ski bar on four high brightness monitors.

A special temperature management guarantees a safe operation at a temperature of -33°C during the winter and in bright sunlight during the summer.



EV 431 | FISS-LADIS

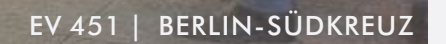
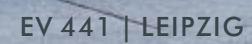


EV 432 | WEIDEN



EV 433 | GRAZ













EV 481 | 46" TOUCHSCREEN-MONITORS - SSB STUTTART



EV 482 | 47" LANDSCAPE OPEN

With an optional mechanism to adjust the alignment, the monitor can be mounted at a tilt towards the viewer of up to 15°.

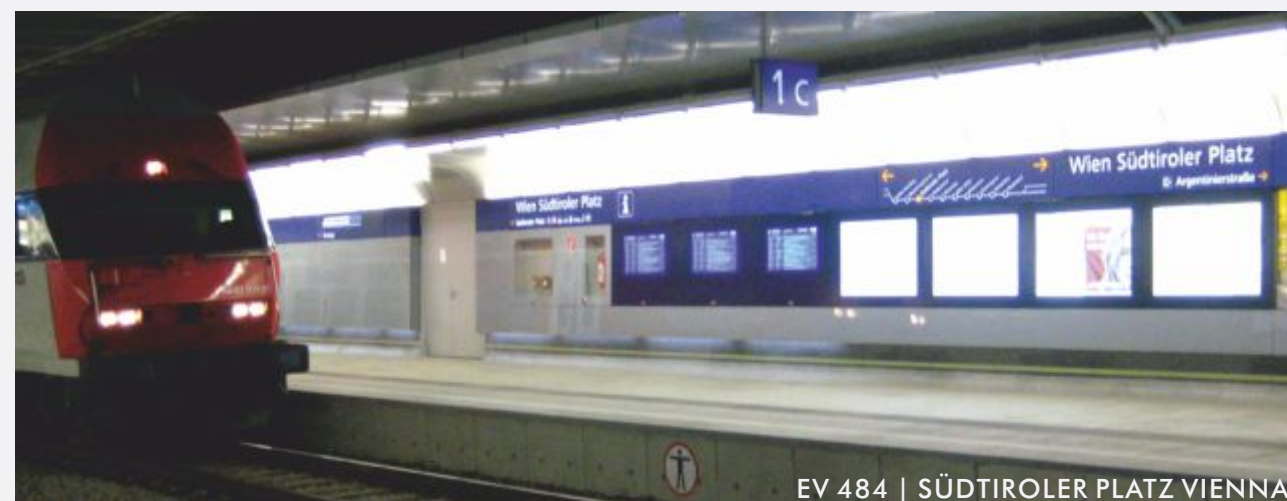
The housings are top-hinged with gas springs. The integrated monitor can be pivoted as well to allow better access to the electronic components



EV 483



EV 491 | CENTRAL STATION VIENNA



EV 484 | SÜDTIROLER PLATZ VIENNA



EV 492 | CENTRAL STATION VIENNA





ST 81  
Coiling sheet machine  
ST 82  
Profile stock II in the logistics centre  
ST 83  
Our vehicle fleet  
ST 84  
Despatch area for monitor showcases  
ST 85  
Profile machining centre - SBZ 628



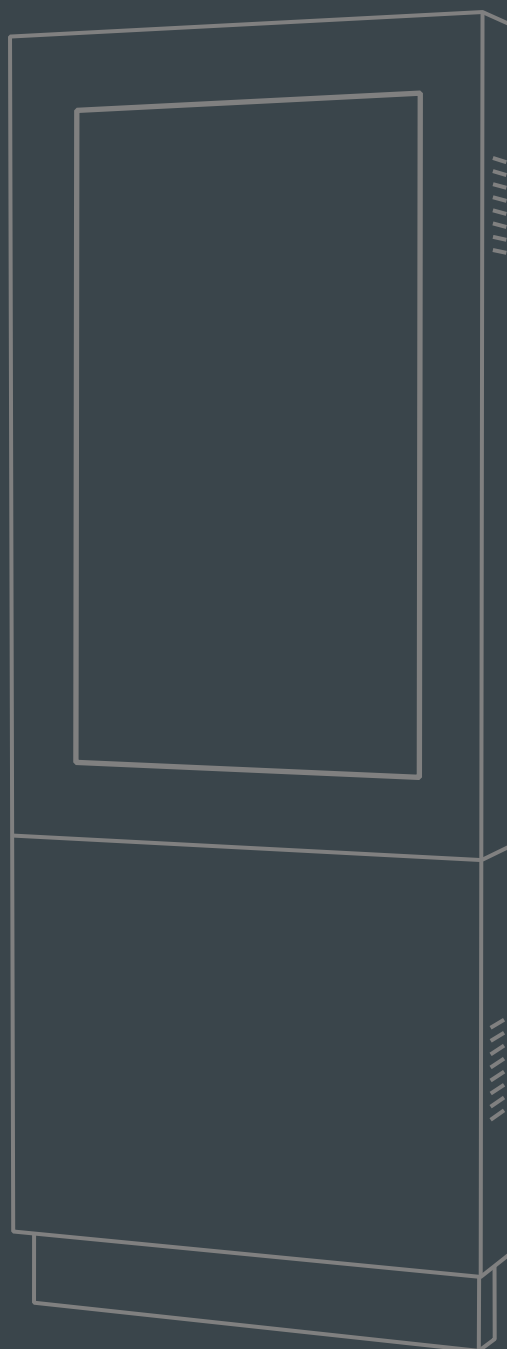
## OUR PROFILE

Since 1969 we plan, develop and manufacture showcases and clocks for a wide range of applications for the indoor and outdoor area. Our innovative information systems are developed by a network of partners, architects and planners to be realised by our team of skilled metal workers, carpenters, glaziers and electronic technicians. It has always been our demand to provide our products with the highest quality, safety and operability and to give them a unique, individual design.

ST 86  
Company headquarters in Bielefeld  
left:  
Office and production  
right:  
Logistics centre and e.Vitrum production  
ST 87  
Logistics centre







**e.VITRUM® | EDITION 6.0**



[www.ST-DIGITAL.de](http://www.ST-DIGITAL.de)

© 2020 - ST-VITRINEN

ST-DIGITAL is a  
business division of  
ST-Vitrinen Trautmann  
GmbH & Co. KG  
Grafenheider Str. 100  
33729 Bielefeld  
Tel: +49 521 97704 - 0  
Fax: +49 521 97704-44  
Mail: [info@st-vitrinen.de](mailto:info@st-vitrinen.de)