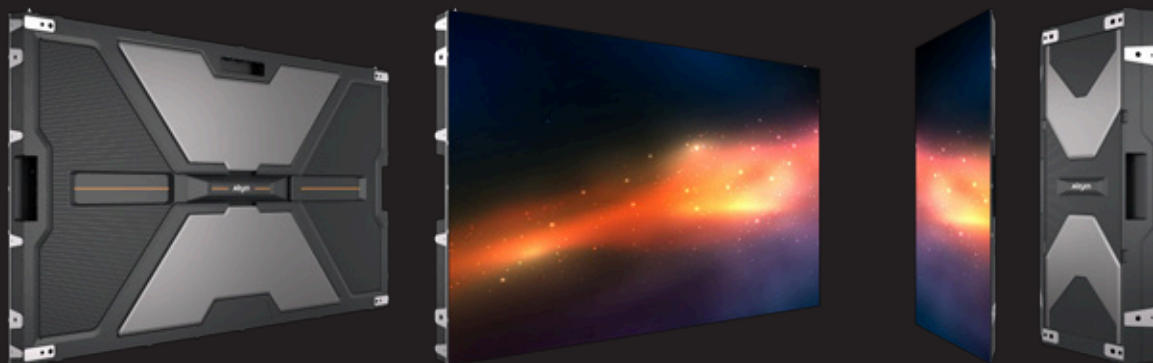


NX Series

Unparalleled visual experience.



NX Series



16: 9
Golden ratio



HDR10
Image processing technology



1500nits
Maximum level of brightness



EMC Class B
Civil use level



45° small panel
Creative shape



20kg/m² 43.5mm
Lightweight and ultra-thin



Precise floating connector
Bright and dark lines adjustment

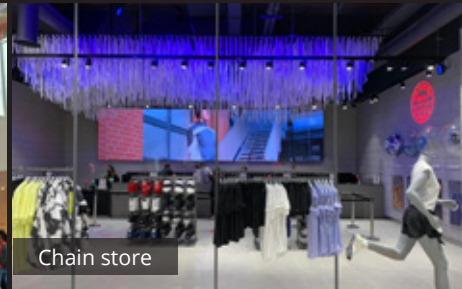


Front/rear maintenance
Module, PSU, receiving card, etc.

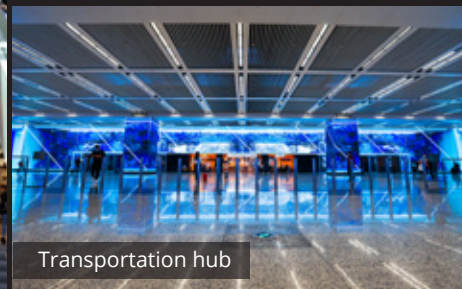
< For all commercial display applications



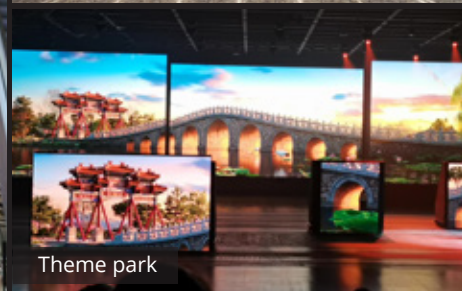
Mall



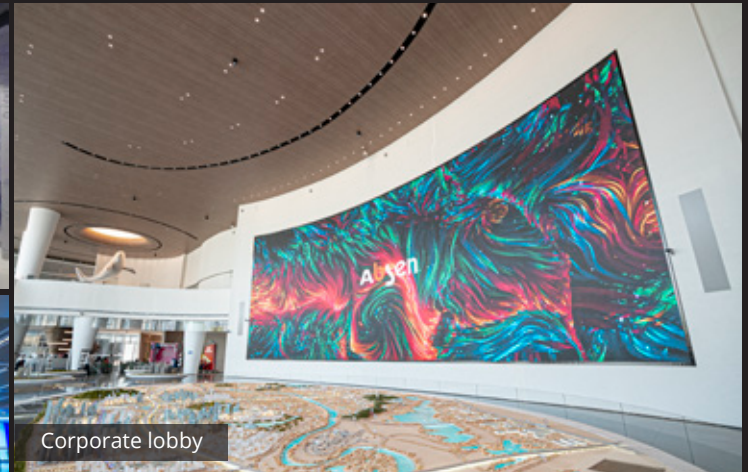
Chain store



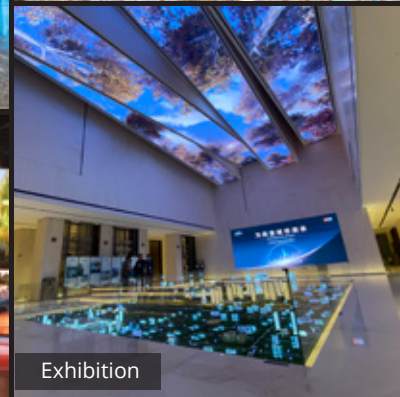
Transportation hub



Theme park



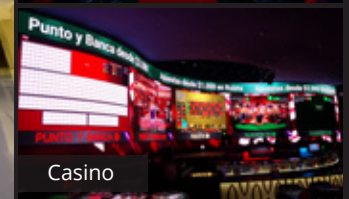
Corporate lobby



Exhibition



Conference room

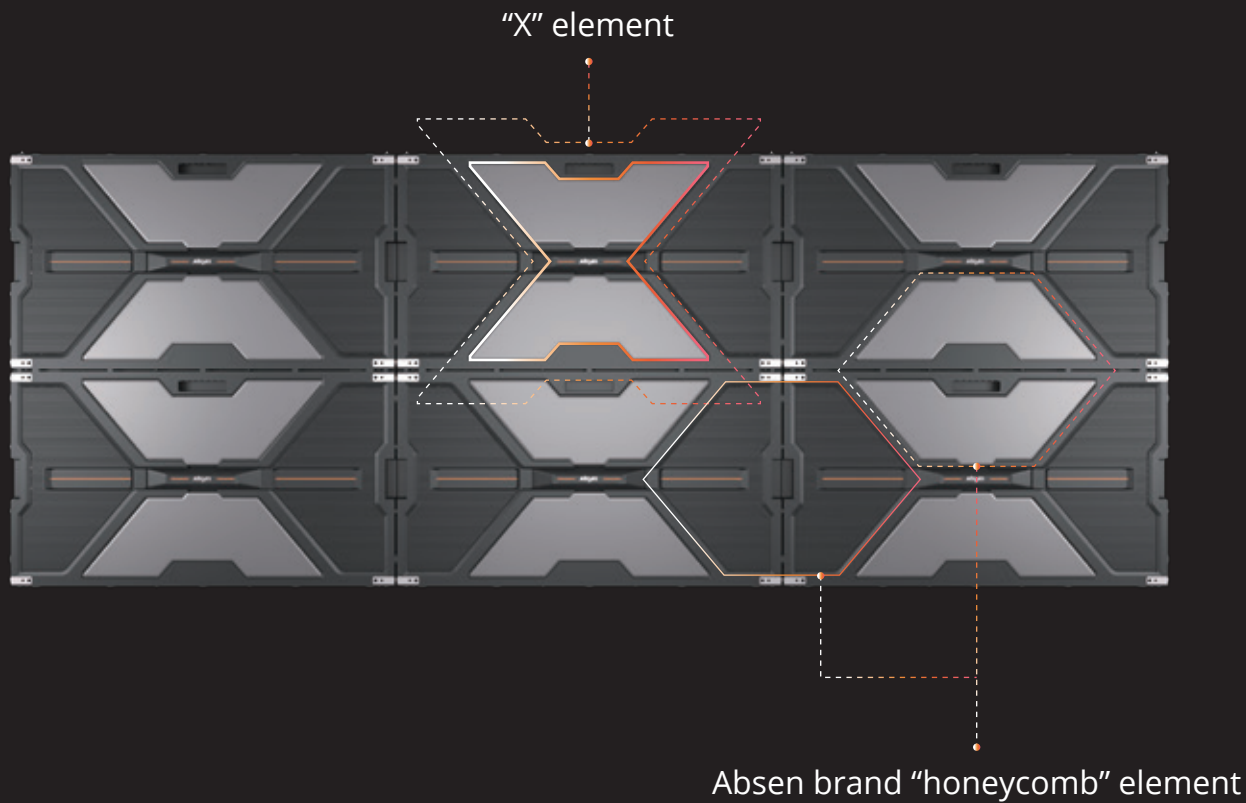


Casino



Striking “X” design

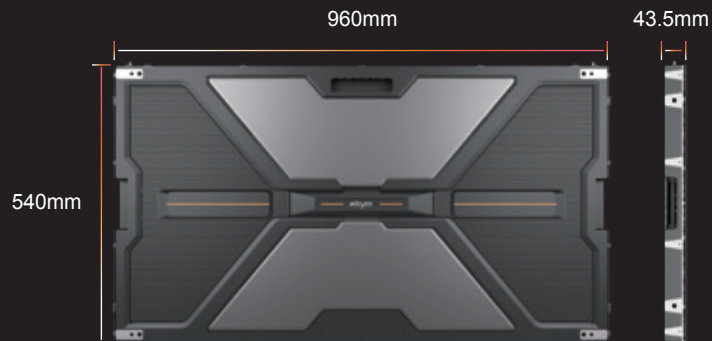
As a symbol of infinite possibilities, letter “X” becomes an exterior design element of the panel, and the Xs will form a “honeycomb”, an Absen brand element. The unique design conveys Absen's confidence in its display expertise and product quality.





Ultra-thin and lightweight panel

16:9 aspect ratio for ideal vision; 43.5mm in thickness and 20kg/m² in weight for better experience.



43 inch panel



16:9
Aspect ratio



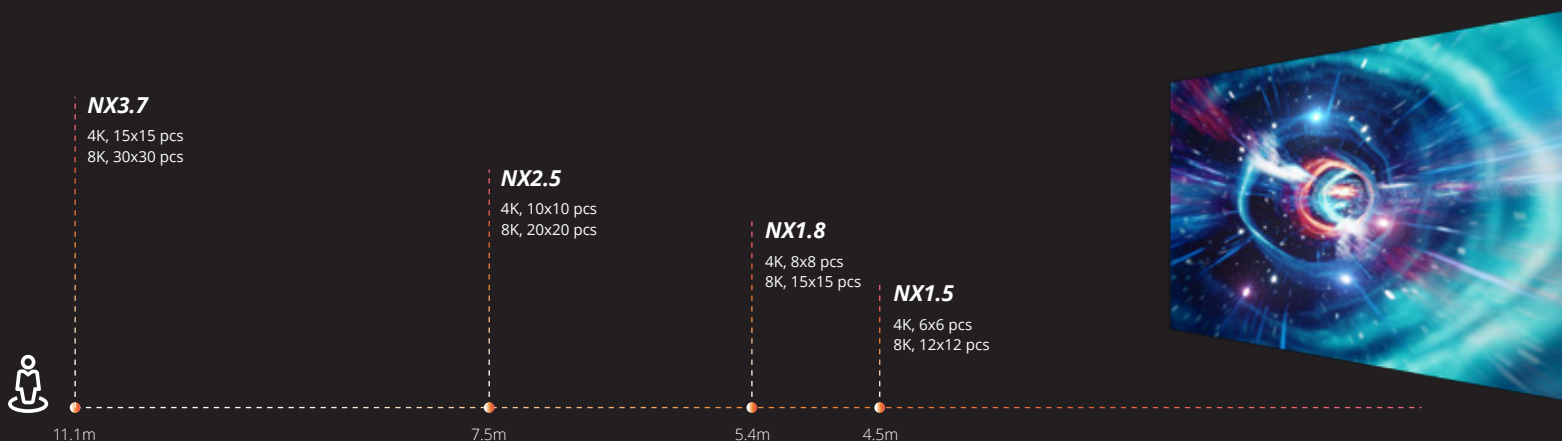
43.5mm
Ultra-thin design



20kg/m²
Ultra-lightweight

Superior 4K/8K visual experience

Products featuring a variety of pixel pitches to provide customers with more high-definition choices.



*Best viewing distance, for reference only



Dual brightness configuration

Dual brightness configurations*, with brightness up to 1000nits for normal brightness and up to 1500nits for high brightness.



1000nits Normal brightness version

For indoor use in brand chain stores, report hall, conference room, house of worship, etc.



1500nits High brightness version

For scenarios severely affected by ambient light, such as shopping mall, corporate lobby, exhibition hall, etc.

*NX1.5 only has normal brightness version.



A5C+ calibration technology

A5C+ pixel by pixel calibration technology eliminates the difference in brightness and chromaticity within and between panels, improves the uniformity of display, and reproduces flawless images.



Before



A5C+ calibration
technology

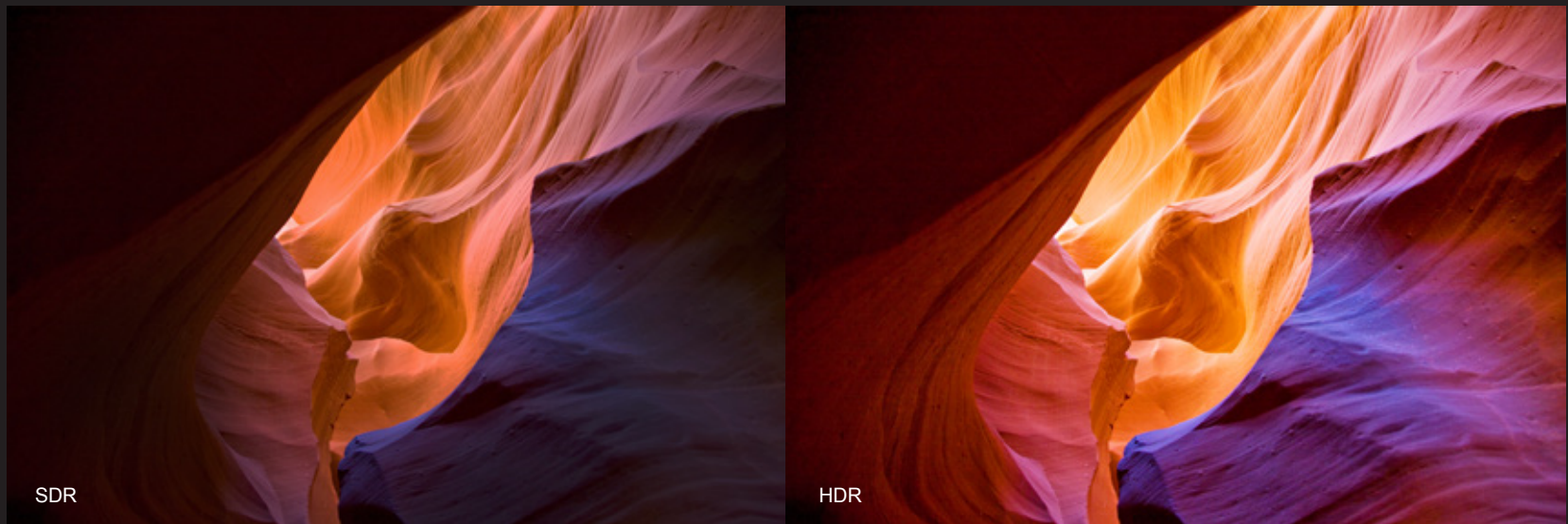


After



Amazing color management technology

Absen's professional color management technology makes the color of the NX series more textured and natural.



HDR10

Image processing technology



7600:1

Highest contrast ratio*



16bits

High grayscale and fine image

*Refers to the NX2.5 high brightness version with a contrast ratio of 7600:1.



High grayscale at low brightness

The NX series supports high grayscale display at low brightness, and details can be revealed even in low brightness condition.



Others | Missing details

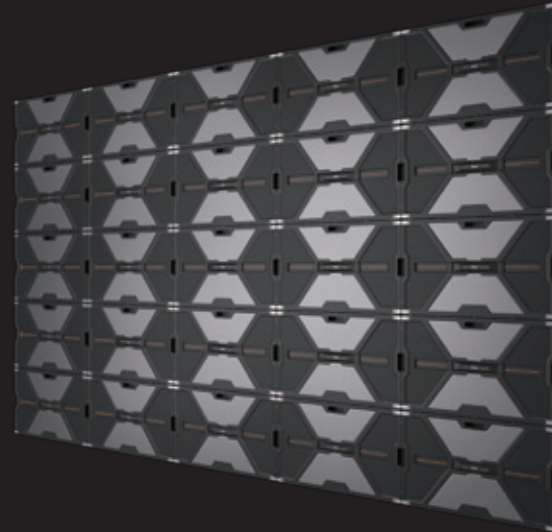


NX Series | Clear details



Anti-blue light and anti-radiation

TÜV Rheinland low blue light certification and EMC Class B for cozy and safe viewing experience.



Low blue light

- TÜV Rheinland low blue light certification
- Protecting eyes from high-energy short-wave blue light



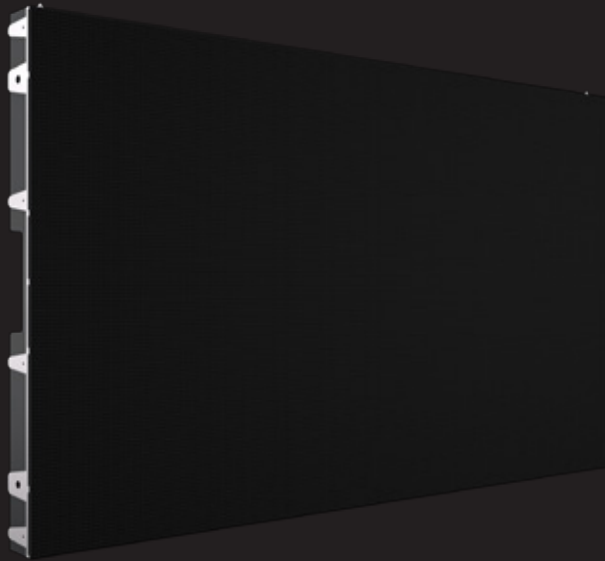
EMC Class B

- Civil use level
- Prevent harm to human body caused by excessive electromagnetic radiation



Efficient dynamic energy-saving technology

NX series can automatically turn on the dynamic energy-saving mode to achieve different energy-saving effects in standby and working states.*



Energy saving 40%
Standby state



Energy saving 20%
Working state



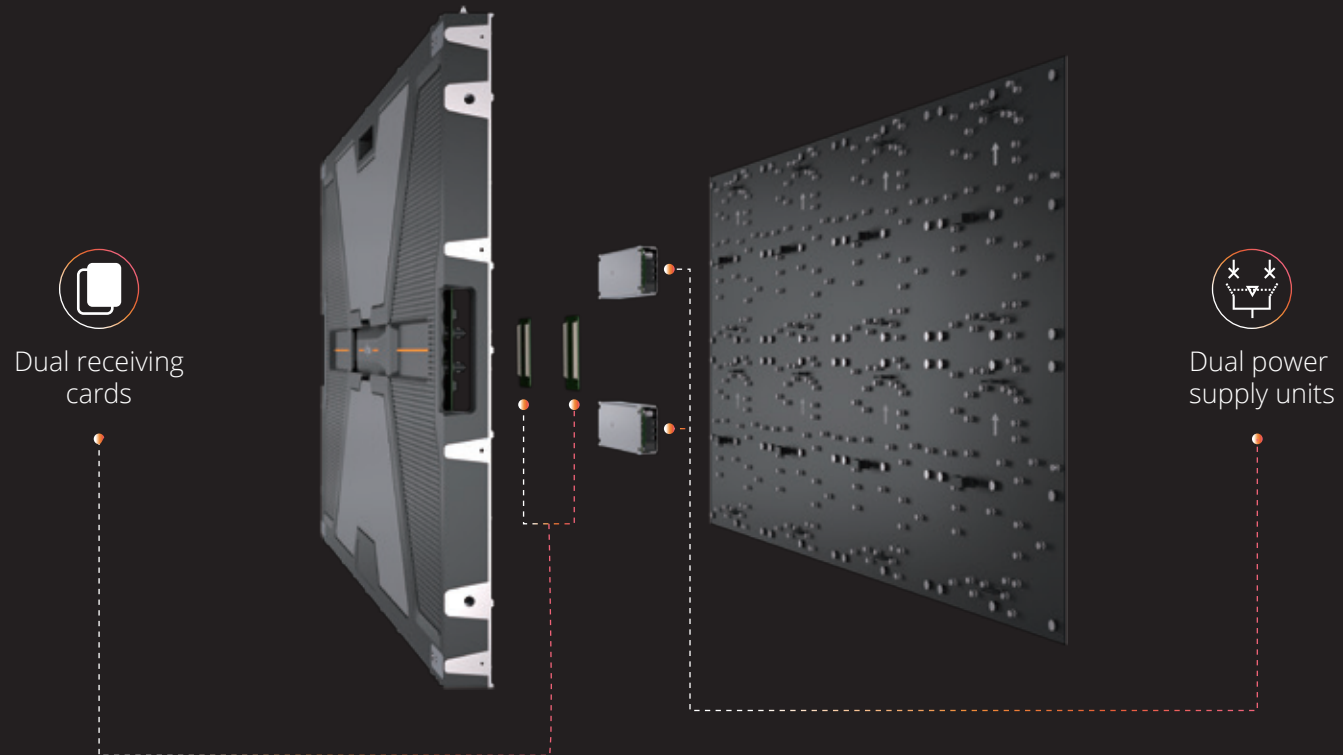
Reduced by 5°
Screen surface temperature

*Only NX1.5 and NX1.8 support dynamic energy saving; energy saving and cooling effect varies from image to image.



Optional dual backup version

Provides optional dual backup version to ensure continuous transmission of signal and power supply.





Flexible 45° edge-cutting small panel

Special 45° edge-cutting small panel provides more possibilities for creativity.

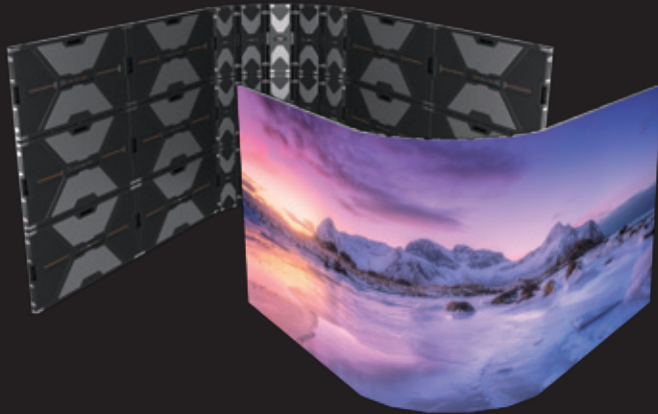


- 45° edge-cutting small panel
(Default 45° angle on both sides)



Creative and refined curves

Support concave and convex splicing to meet the various needs of customers.



- Flat screen with large panels + curve splicing with small panels

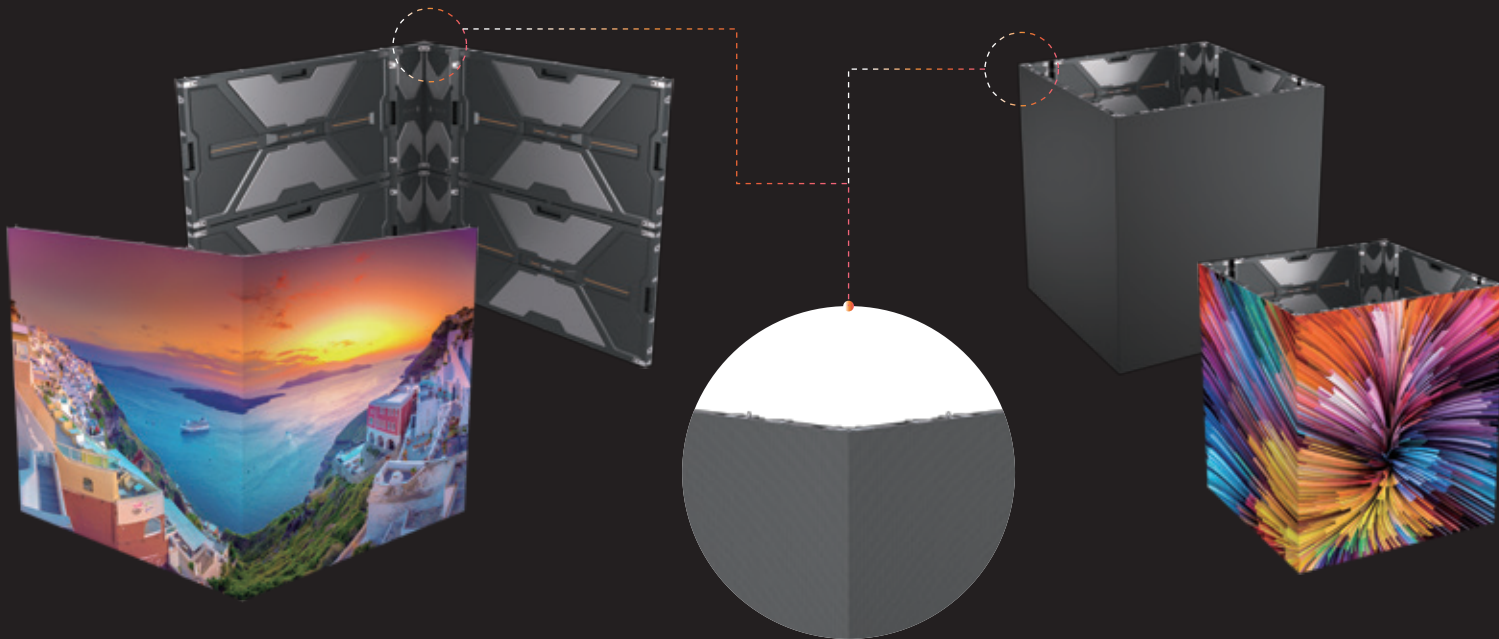


- Artistic wavy splicing with small panels



Seamless and elegant L-shaped splicing

The small panels can make a right angle to create stunning and seamless L-shapes.



● 90° seamless splicing



A whole new level of flatness and neatness

With high-precision floating connectors, positioning copper column and X/Y/Z axis alignment, flatness is improved multidimensionally. NX series adopts a hidden wiring design for neat look in the back.



Precise floating connector

Bright and dark lines
adjustment between modules



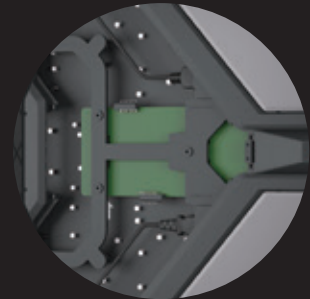
Positioning copper column

Flatness adjustment between
modules



X/Y/Z axis alignment

Flatness adjustment
between panels



Hidden wiring design

Tidy and elegant back

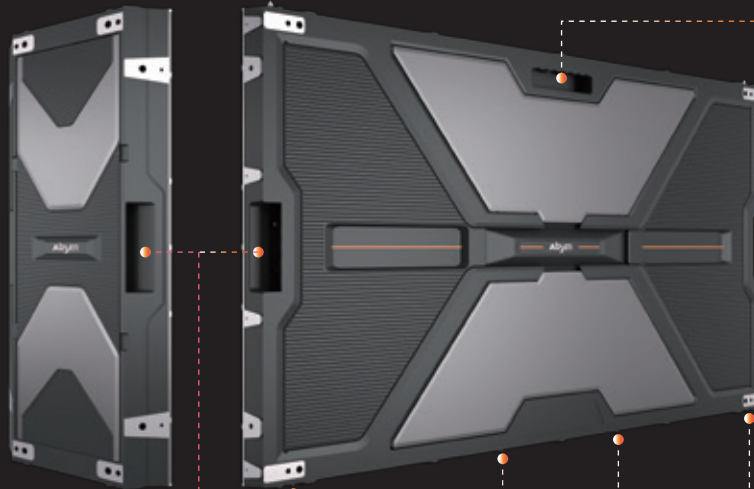


Ergonomic design and easy installation

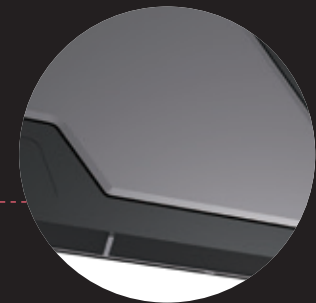
Ergonomic handles and anti-collision design for safe, fast and easy installation.



• Anti-slip side handle



• Carrying handle

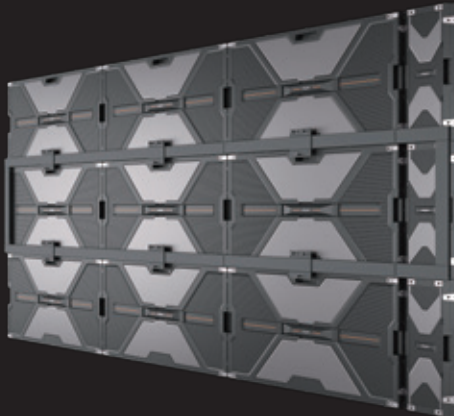


• Anti-collision design



Slim standard wall-mounting solution

Standard wall-mounting solution with a thickness of less than 80 mm, space-saving and beautiful.



- Backing strip thickness
21mm



- Wall-mounting thickness
 $\leq 80\text{mm}$

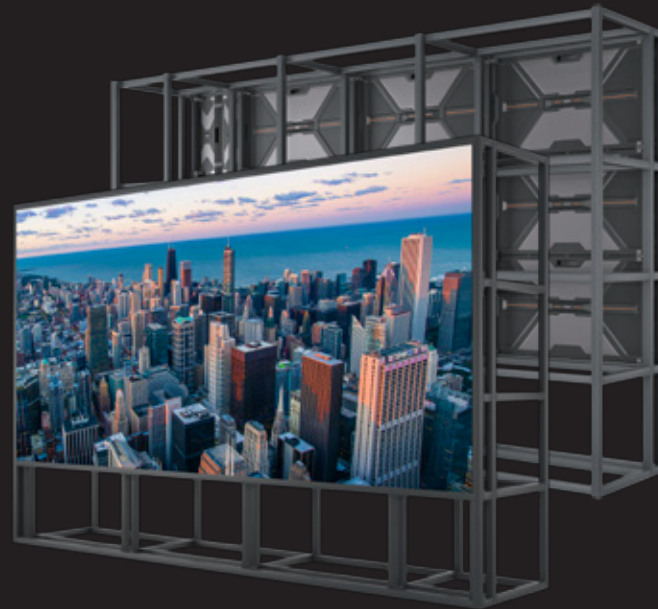


Supports hanging and stacking installation

Also provides hanging bar installation and steel structure stacking installation solutions to fit in all use scenarios.



- Suspended with all-black hanging bar

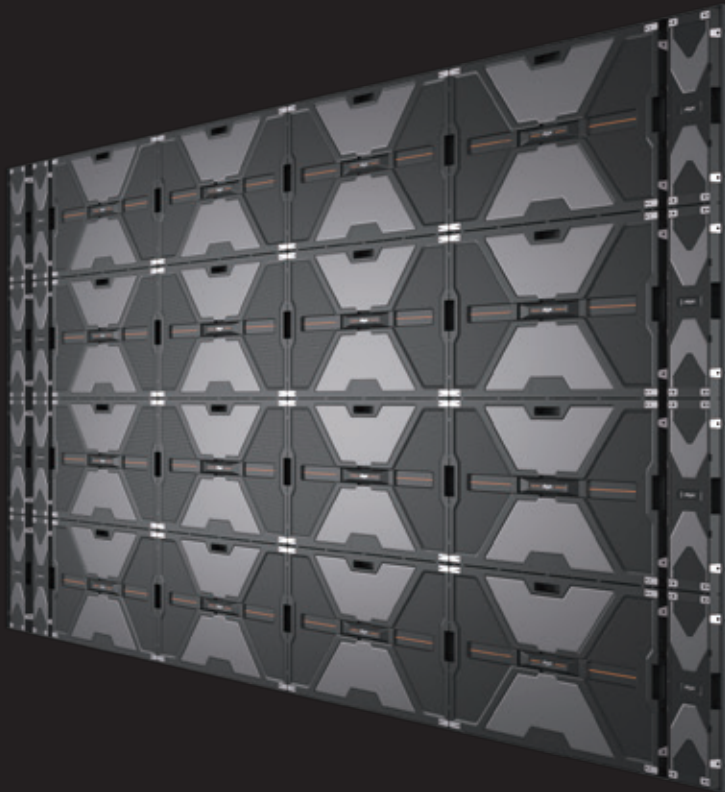


- Floor installation with steel structure



Ultra-thin and textured trim pieces

Metal spraying ultra-thin standard trim pieces solution for enhanced look and esthetic feeling.



Metal spraying process

Delicate and smooth



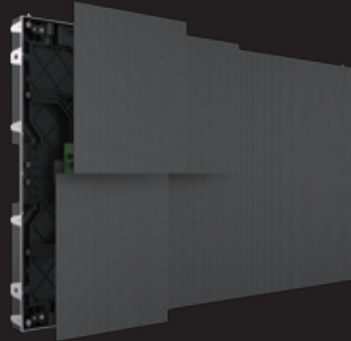
5mm thickness

Ultra-thin design



Convenient full front / rear maintenance

NX Series supports full front maintenance, requires no special maintenance channels, and saves more space. Additionally, the NX series features an innovative rotary clamshell back cover design, enabling full rear maintenance*.



- Front maintenance of module, PSU, receiving card, HUB board, etc.



- Dedicated front maintenance tool



- Rotary clamshell design for easy rear maintenance



- Supports rear maintenance of module, PSU, receiving card, HUB board, etc.

*Small panel adopts rotary clamshell design as well and support rear maintenance of PSU and receiving card.

Quality and worry-free choice

It is manufactured in Absen's own factory through a standardized production process, and has obtained multiple certifications, allowing customers to use it without any worries.



Standardized manufacturing process

Every step of the production process is strictly managed to ensure product quality



Strict quality control

18 monitoring procedures 33 recording procedures
29 operating procedures 2,285 inspections and tests



Multiple certifications

Passed CE, ETL, FCC, CB, CCC certifications
TÜV Rheinland low blue light certification
Passed performance test recognized by CNAS accredited institution



Professional service, best experience

Absen's philosophy is initiative, efficiency, standardization and thoughtfulness.

Absen has built up a global network , able to provide prompt and professional local services.



Comprehensive support

Enjoy 2-year warranty, support up to 3-year extended warranty, lifetime maintenance, and enjoy 10+ items of professional service solutions to help you solve problems



24/7 response

24/7/365 available,
quick response in 10 seconds



Global coverage

400+ Absen certified partners, 2,600+ Absen certified engineers, covering most of the global market, the global service network is continuing to expand vigorously



One-stop service

Enjoy exclusive and professional service
in the whole process of pre-sales,
sales and after-sales



Multiple service channels

Providing service via multiple channels such as Hot line, WeChat, WhatsApp, E-mail and official website to quickly take care of service requirements



Service channels

Hot line: +86 400-700-3278

WeChat: 13923413428

WhatsApp: 008613923413428

Email: service@absen.com

Official website: www.absen.com



Service time (GMT+8)

8:30~24:00: Staff service

00:00~8:30: Intelligent system service

Parameters		NX1.5	NX1.8 Normal	NX1.8 High brightness	NX2.5 Normal	NX2.5 High brightness	NX3.7 Normal	NX3.7 High brightness
Physical parameters	LED type	SMD1212	SMD1515	SMD1515	SMD1515	SMD1515	SMD1515	SMD1515
	Pixel pitch (mm)	1.5	1.87	1.87	2.5	2.5	3.75	3.75
	Panel dimensions (W*H, mm)	960x540x43.5/240x540x43.5						
	Panel resolution	640×360	512×288	512×288	384×216	384×216	256×144	256×144
	Panel weight (kg)	10						
	Panel material	Die casting aluminum						
	Module size (W*H, mm)	240×270						
Photoelectric parameters	Brightness (nit)	1000	1000	1500	1000	1500	1000	1500
	Refresh rate (Hz)	3840						
	Grayscale (bit)	16 Bit						
	Contrast ratio	4600:1	4100:1	6000:1	5700:1	7600:1	4500:1	7400:1
	Color temperature (K)	6500						
	Viewing angle (H/V, °)	150/150	160/160	160/160	160/150	160/130	160/160	160/160
	Drive mode	1/45	1/36	1/36	1/27	1/27	1/18	1/18
	AC operating voltage(V)	100~240						
Application parameters	Power consumption (max./avg., W/m²)	582/194	630/210	606/202	540/180	534/178	600/200	609/203
	Storage temperature (°C)	-40~+60						
	Operating temperature (°C)	-10~+40						
	Storage humidity (RH)	10%~85%						
	Operating humidity (RH)	10%~80%						
	IP rating	IP40/IP21						
	LED lifetime (h)	100000						
	Panel maintenance type	Fully front/ rear						
	Panel installation type	Stacking/ wall-mounting/ hanging						

*Note: It is normal for the photoelectric parameters to fluctuate within ±15%. Please refer to the actual situation.

★ Shenzhen Absen Optoelectronic Co., Ltd. reserves the right to modify product design, specifications, and parameters without further notice.
Photos are used for illustration purpose only as products may differ from these photos. All rights reserved by Shenzhen Absen Optoelectronic Co., Ltd.

Absen Optoelectronic Co.,Ltd

18-20F Building 3A, Cloud Park, Bantian Huawei Base,
Longgang District Shenzhen, 518129, P.R.China
T: +86-755-89747399 E: absen@absen.com
F: +86-755-89747599 W: www.absen.com

Absen Inc.

7120 Lake Ellenor Drive, Orlando,
Florida 32809, USA
T: +1-407-203-8870 E: info@usabsen.com
F: +1-407-203-8873 W: www.usabsen.com

Absen GmbH

Hessenring 4c, 64546 Moerfelden-Walldorf (Frankfurt am Main),
Germany
T: +49 (0) 6105 718941-0 E: europe@absen.com
F: +49 (0) 6105 718941-29 W: www.absen-europe.com



Twitter: @LEDAbsen Facebook: @LEDAbsen
LinkedIn: Absen Instagram: absenled