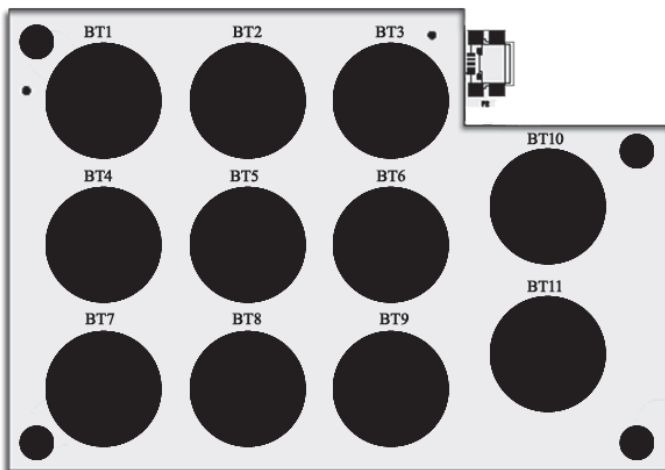
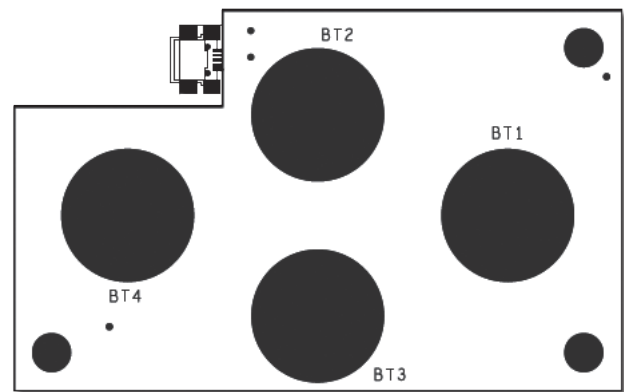


## USB Button Panels for Interactive Displays

BrightSign's USB Button Panel series of products adds interactivity to any display or product demonstrations with ease. They offer not only capacitive touch button interactivity, but also light controlled feedback allowing for the creation of unique and intuitive displays. The Button Panels are easy to integrate into displays and support custom overlays and enclosures to create the look you need. Custom button panel operations are simple to program using the BrightAuthor PC application.

### BP200: Four button control panel

- Thin board design that can easily be overlaid with graphics and integrated into displays and enclosures
- USB connection
- Four capacitive touch buttons
- Bright red LED lighting in center of each button
- Programmable button operation and lighting via BrightAuthor PC application
- Dimensions: 101.6 mm (W) x 63.5 mm (D) x 11.1 mm (H)  
4.0" (W) x 2.5" (D) x .44" (H)
- Weight: 46 grams or 1.62 oz
- Compatible with BrightSign HD810, HD1010, HD1010w



### BP900: Eleven button control panel

- Thin board design that can easily be overlaid with graphics and integrated into displays and enclosures
- USB connection
- Eleven capacitive touch buttons
- Bright red LED lighting in center of each button
- Programmable button operation and lighting via BrightAuthor PC application
- Dimensions: 139.7 mm (W) x 101.6 mm (D) x 11.1 mm (H)  
5.5" (W) x 4.0" (D) x .44" (H)
- Weight: 46 grams or 1.62 oz
- Compatible with BrightSign HD810, HD1010, HD1010w

12980 Saratoga Avenue, Saratoga, CA 95070

[www.brightsign.biz](http://www.brightsign.biz) • +1.408.852.9263 USA • +44 1223 911842 International • [sales@brightsign.biz](mailto:sales@brightsign.biz)