



SPINETIX™
N°1 IN DIGITAL SIGNAGE SOLUTIONS

Elementi Widgets

Quick Guide

Latest update: June 2018

System Requirements

Windows

- Microsoft® Windows® 10, Windows® 8.1, Windows® 7 with Service Pack 1, Windows® Vista with Service Pack 2.
- A 32-bit or 64-bit processor (Elementi is a 32-bit application, but it also runs on a 64-bit processor)
- 200 MB of available hard-disk space for installation
- Intel® Pentium® 4, AMD Athlon® 64 processor or newer that supports SSE2 instruction set
- 4GB of RAM
- Resolution above 1024x768 DirectX 9.0c or later with 32-bit color

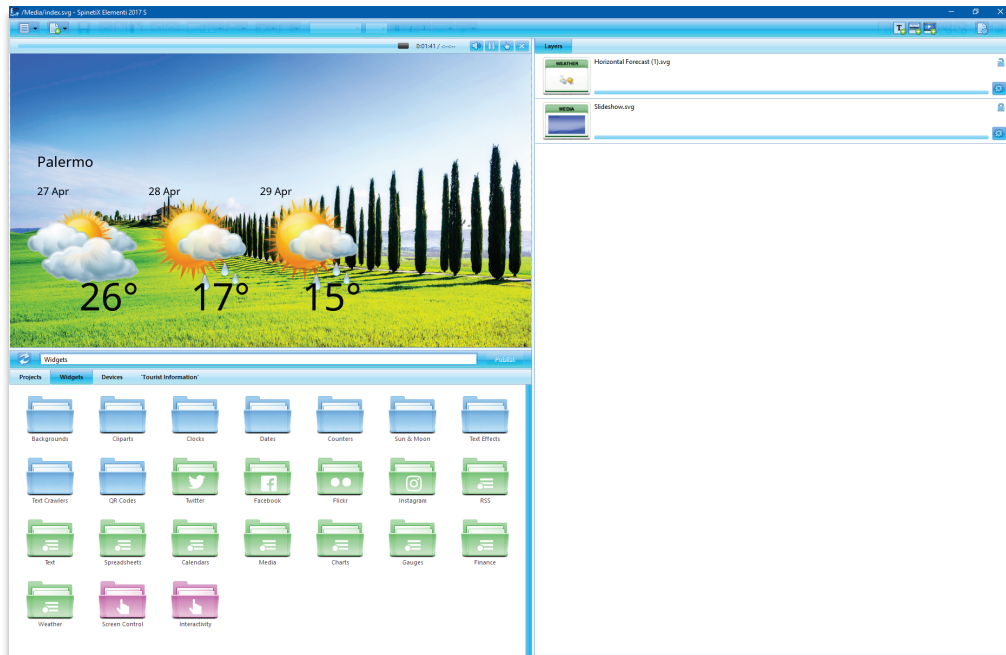
Elementi cannot be used without activation. Internet connection is required for download, activation, and reactivation.

Notes

- *Mac OS is not supported, however Boot Camp (with or without Parallels Desktop) runs compatible versions of Microsoft® Windows® or Intel-based Mac*
- *Linux OS is not supported*
- *Windows® Server OS is not supported*
- *Virtual machine is not recommended mostly for performance reasons*

Widgets

Widgets are digital signage components designed to display live content that auto-updates.

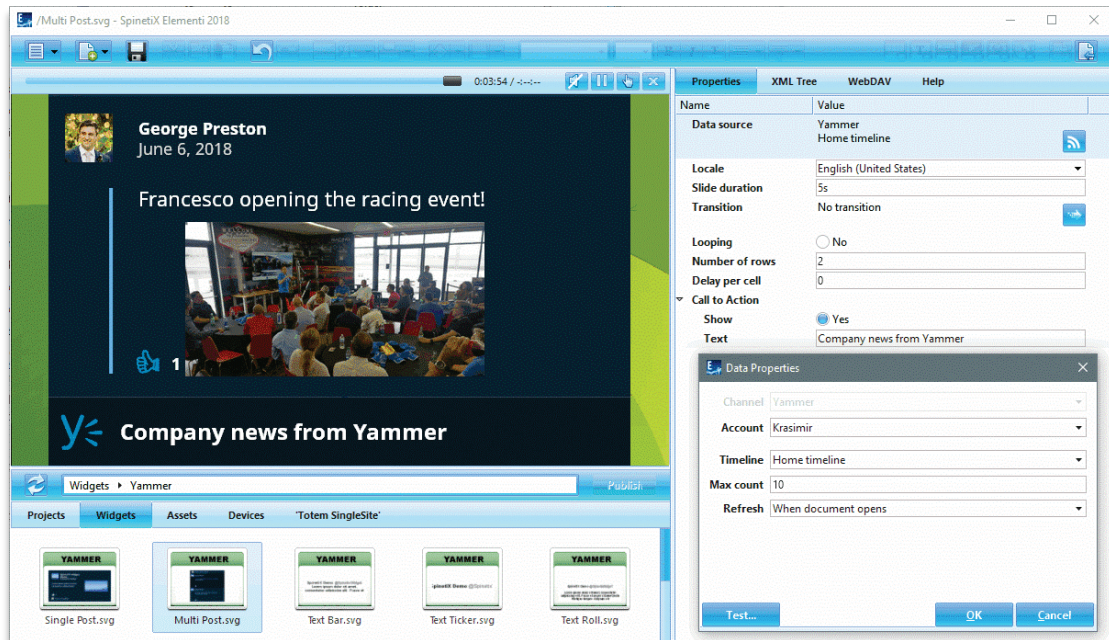


The following widgets are included in Elementi:

Backgrounds	a selection of background images
Cliparts	a selection of cliparts
Clocks	a selection of analogue and digital clock widgets
Dates	a selection of date widgets in different calendar formats
Counters	a selection of counter widgets
Sun & Moon	a selection of widgets to display Sun and Moon times
Text Effects	a selection of advanced text effects
Text Crawlers	a selection of widgets to display crawling text
QR Codes	a selection of widgets to display QR codes
Twitter	a selection of widgets to display data sourced from Twitter
Facebook	a selection of widgets to display data sourced from Facebook
Flickr	a selection of widgets to display data sourced from Flickr
Instagram	a selection of widgets to display data sourced from Instagram
Yammer NEW	a selection of widgets to display data sourced from Microsoft Yammer
RSS	a selection of widgets to display RSS data
Text	a selection of widgets to display data in the form of text
Spreadsheets NEW: EXCEL GRAPHS	a selection of widgets to display data from a spreadsheet or a SharePoint list
Calendars	a selection of widgets to display data from a calendar
Media NEW: GOOGLE DRIVE CHANNEL	a selection of widgets to display media
Charts	a selection of widgets to display data in the form of charts
Gauges	a selection of widgets to display data in the form of gauges
Finance	a selection of widgets to display financial data
Weather	a selection of widgets to display weather
Screen Control	a selection of widgets to control displays (on/off, volume, etc.)
Interactivity NEW: BLUE PACK WIDGETS	a selection of widgets to create interactivity content

Yammer Widgets NEW

Yammer widgets enable users to display Microsoft Yammer posts, media, etc. posted on their Yammer account.



Yammer Widgets' Selection


There are many Yammer widgets to choose from: Single Post, Multi Post, Text Bar, Text Ticker, Text Roll, and Slideshow.

Editing Yammer Widgets

To edit, simply drag and drop the selected widget to a layout, a playlist or a schedule. The selected widget will be automatically copied into the current project.

Yammer Widget Properties

To setup the widget:

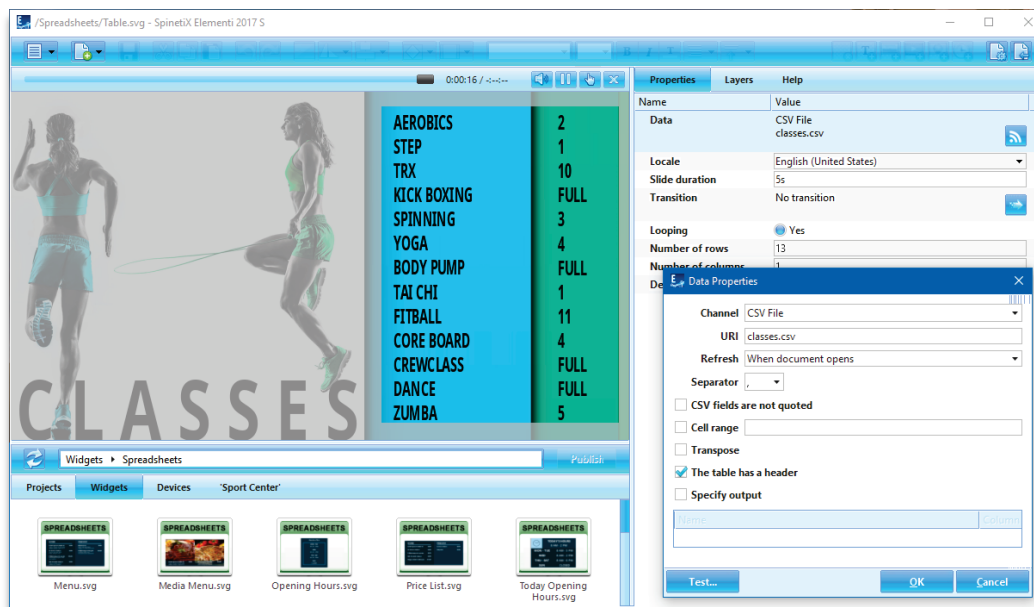
1. Click on this button  and the Yammer channel will already be allocated,
2. Connect your Yammer account via Cockpit which takes just a minute or two and is done only once,
3. Customize further depending on your needs.

Tech Support

Learn more about Yammer widgets: support.spinetix.com/wiki/Yammer_widgets.

Spreadsheet Widgets NEW: EXCEL GRAPHS

Spreadsheet widgets enable users to display sports results, price lists, production data and any other information natively arranged in rows and columns. They are the most popular widgets due to their power and flexibility. In the latest Elementi version, you can now add Excel graphs directly on screen. You can also connect to a SharePoint list.



Spreadsheet Widgets' Selection

There are many Spreadsheet widgets to choose from: Text Bar, Text Ticker, Text Roll, Slideshow, Table, Chart (Excel graph) as well as a number of Blue Pack widgets (see 6).


Editing Spreadsheet Widgets

To edit, simply drag and drop the selected widget to a layout, a playlist or a schedule. The selected widget will be automatically copied into the current project. Spreadsheet widgets can be easily stylized.

Spreadsheet Properties

The most common channels for Spreadsheet widgets are Microsoft Excel (.xlsx and .csv files), Google Sheets, and Excel Online.

To setup the widget:

1. Click on this button ,
2. Select the channel - please note that to use Google Sheets or Excel Online, you would need to connect your Google and/or Microsoft account via Cockpit which takes just a minute or two and is done only once,
3. Customize further depending on your needs.

Tech Support

Learn more about Spreadsheet widgets: support.spinetix.com/wiki/Spreadsheet_widgets.

Blue Pack Spreadsheet Widgets

You can readily customize and use Blue Pack widgets in your project. There are many Blue Pack Spreadsheet widgets to choose from: **Menu**, **Media Menu**, **Price List**, **Opening Hours**, and **Wayfinding**.

Menu and Media Menu

Display a menu on the screen composed of images/lists with item description and item price.



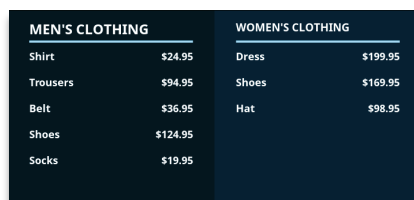
Opening Hours

Display opening hours information on the screen.



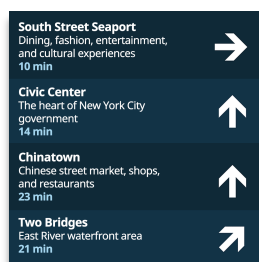
Price List

Display a price list on the screen.



Way Finding

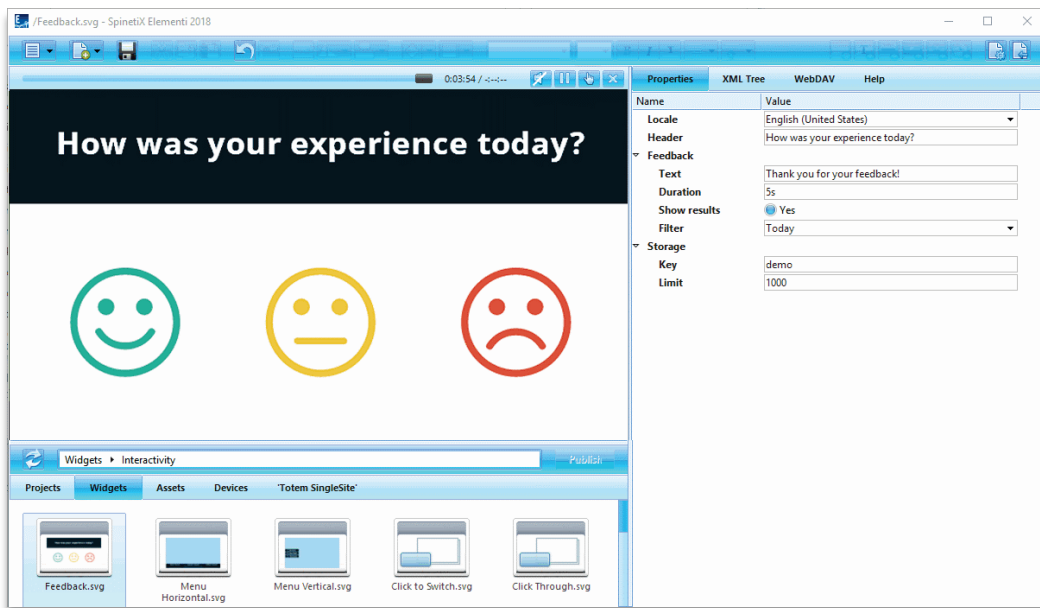
Display a list of various locations. Each location has a set name and description. Arrows are used to point the general direction.



Interactive Widgets NEW: BLUE PACK WIDGETS

The interactive widgets have been designed to facilitate creating interactive digital signage projects. For example, they help you get feedback from your audience or provide useful information like way-finding with an interactive twist. These widgets display a default content "page" which gets replaced by a different one when a button is clicked, a key is pressed, or an action trigger is activated.

The new Elementi version features Feedback and Menu 'Blue Pack' Interactive widgets.



Interactive Widgets' Selection

There are many Interactive widgets to choose from: **Feedback**, **Horizontal and Vertical Menu**, **Click to Switch**, **Click to Action Virtual Keyboard**, etc.

Editing Interactive Widgets

To edit, simply drag and drop the selected widget to a layout, a playlist or a schedule. The selected widget will be automatically copied into the current project.

Interactive Properties

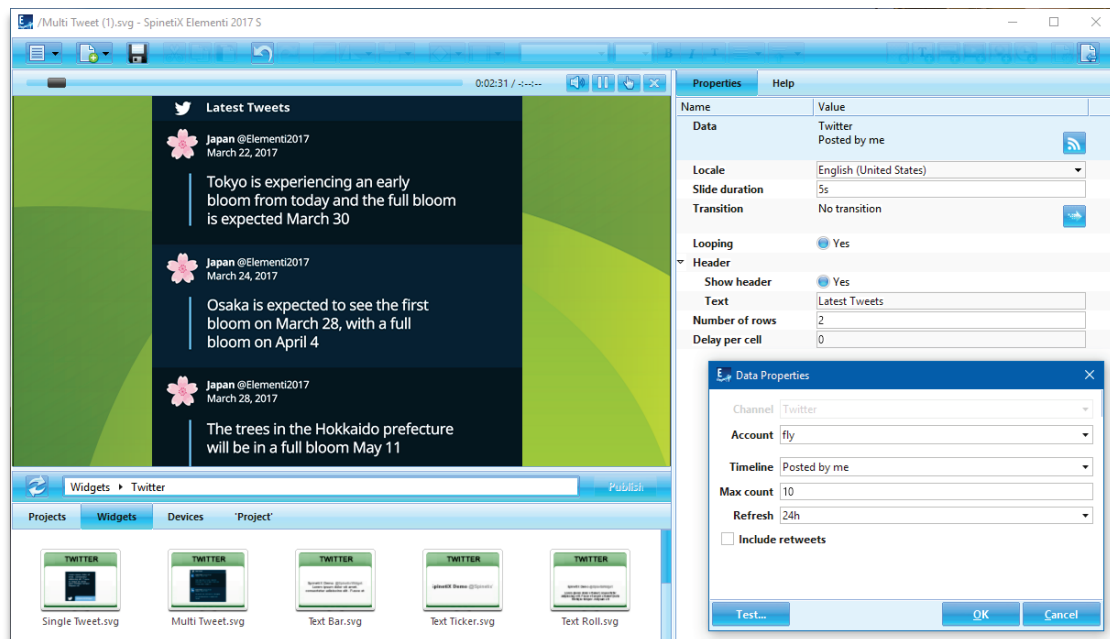
Depending on which Interactive widget you choose, you can change Transition properties, position on screen, size, add a Finger touch indicator, and configure a virtual or a physical button or a combination of buttons to control screen content.

Tech Support

Learn more about Spreadsheet widgets: support.spinetix.com/wiki/Interactive_widgets.

Twitter Widgets

Twitter widgets enable users to display tweets, media, etc. posted on their Twitter account.



Twitter Widgets' Selection


There are many Twitter widgets to choose from: Single Tweet, Multi Tweet, Text Bar, Text Ticker, Text Roll, and Slideshow.

Editing Twitter Widgets

To edit, simply drag and drop the selected widget to a layout, a playlist or a schedule. The selected widget will be automatically copied into the current project.

Twitter Widget Properties

To setup the widget:

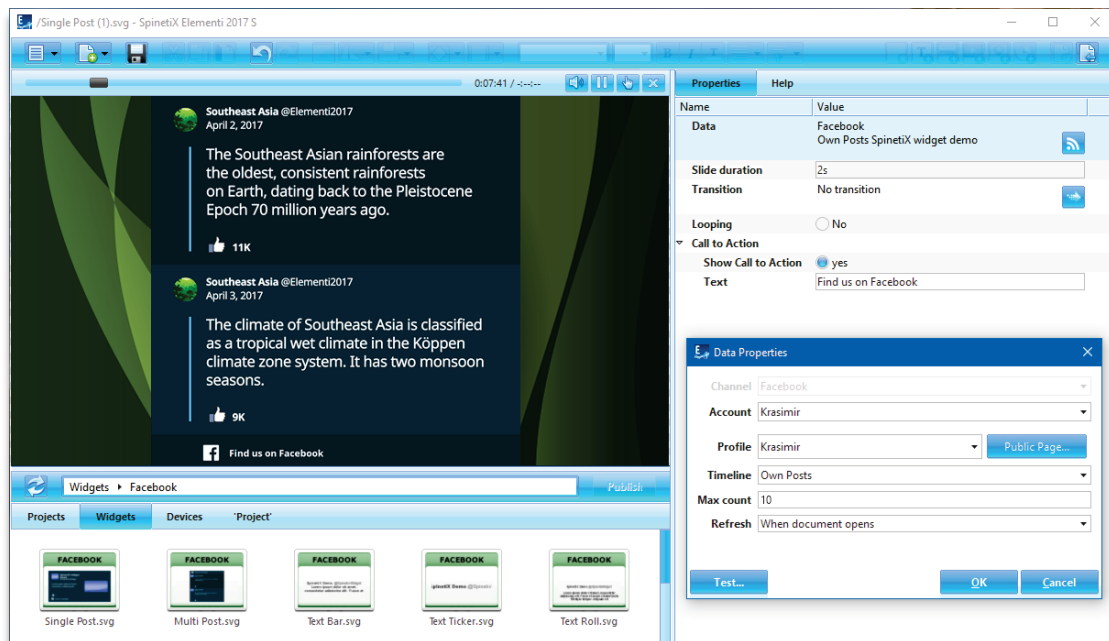
4. Click on this button  and the Twitter channel will already be allocated,
5. Connect your Twitter account via Cockpit which takes just a minute or two and is done only once,
6. Customize further depending on your needs.

Tech Support

Learn more about Twitter widgets: support.spinetix.com/wiki/Twitter_widgets.

Facebook Widgets

Facebook widgets enable users to display Facebook posts, media, etc. posted on their Facebook account.



Facebook Widgets' Selection


There are many Facebook widgets to choose from: Single Post, Multi Post, Text Bar, Text Ticker, Text Roll, and Slideshow.

Editing Facebook Widgets

To edit, simply drag and drop the selected widget to a layout, a playlist or a schedule. The selected widget will be automatically copied into the current project.

Facebook Widget Properties

To setup the widget:

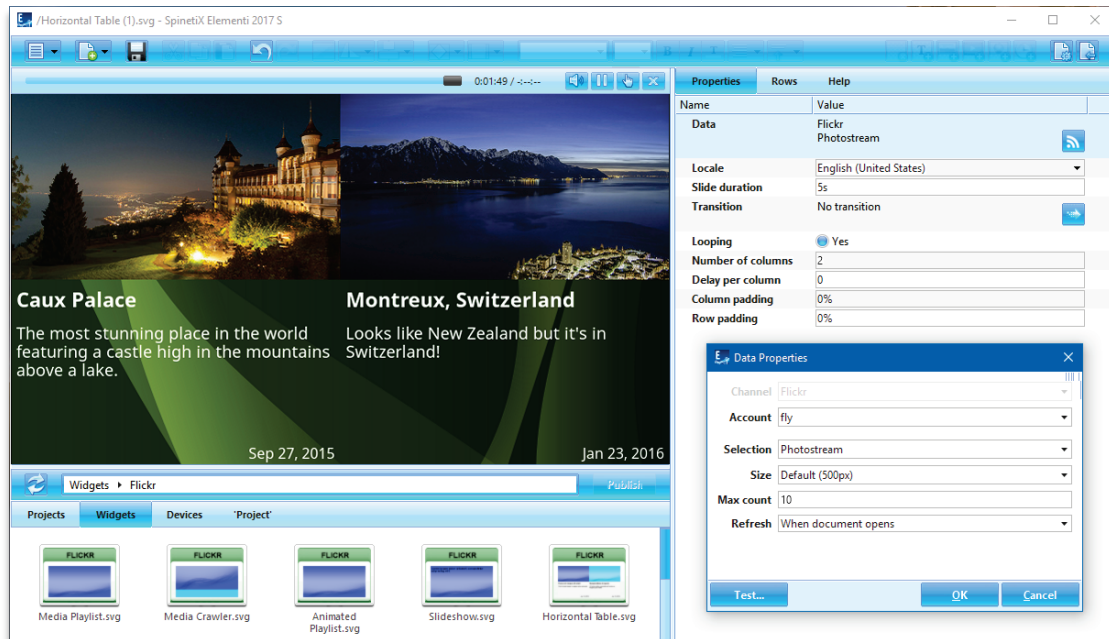
1. Click on this button  and the Facebook channel will already be allocated,
2. Connect your Facebook account via Cockpit which takes a minute or two and is done only once,
3. Customize further depending on your needs.

Tech Support

Learn more about Facebook widgets: support.spinetix.com/wiki/Facebook_widgets.

Flickr Widgets

Flickr widgets enable users to display photos, titles, etc. posted on their Flickr account.



Flickr Widgets' Selection


There are many Flickr widgets to choose from: **Media Playlist**, **Media Crawler**, **Animated Playlist**, **Slideshow**, and **Table**.

Editing Flickr Widgets

To edit, simply drag and drop the selected widget to a layout, a playlist or a schedule. The selected widget will be automatically copied into the current project.

Flickr Widget Properties

To setup the widget:

1. Click on this button  and the Flickr channel will already be allocated,
2. Connect your Flickr account via Cockpit which takes just a minute or two and is done only once,
3. Customize further depending on your needs.

Tech Support

Learn more about Flickr widgets: support.spinetix.com/wiki/Flickr_widgets.

Instagram Widgets

Instagram widgets enable users to display posts and photos posted on their Instagram account.



Instagram Widgets' Selection


There are many Instagram widgets to choose from: Single Post, Multi Post, Media Playlist, Media Crawler, Animated Playlist, and Slideshow.

Editing Instagram Widgets

To edit, simply drag and drop the selected widget to a layout, a playlist or a schedule. The selected widget will be automatically copied into the current project.

Instagram Widget Properties

To setup the widget:

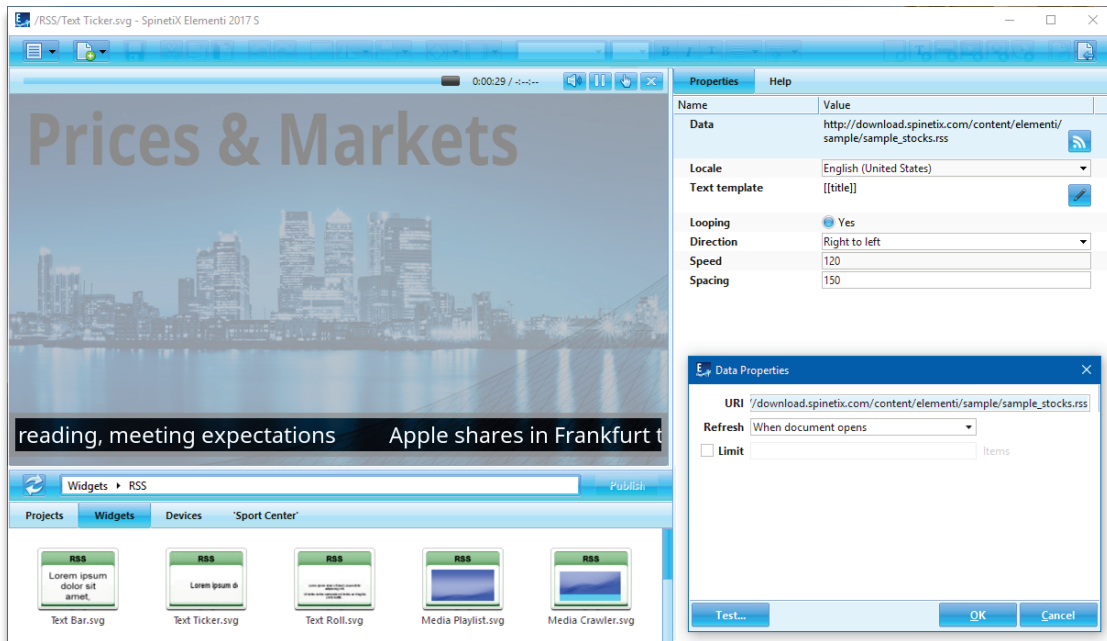
1. Click on this button  and the Instagram channel will already be allocated,
2. Connect your Instagram account via Cockpit which takes just a minute or two and is done only once,
3. Customize further depending on your needs.

Tech Support

Learn more about Instagram widgets: support.spinetix.com/wiki/Instagram_widgets.

RSS Widgets

RSS widgets enable users to display content such as news and video headlines, markets, sports events, etc. This content is syndicated through RSS feeds.



RSS Widgets' Selection

There are many RSS widgets to choose from: Text Bar, Text Ticker, Text Roll, Media Playlist, Media Crawler, Slideshow, and Table.


Editing RSS Widgets

To edit, simply drag and drop the selected widget to a layout, a playlist or a schedule. The selected widget will be automatically copied into the current project.

RSS Properties

Many RSS feeds such as CNN, Reuters, FT, etc. are readily available on the Internet.

To setup the widget:

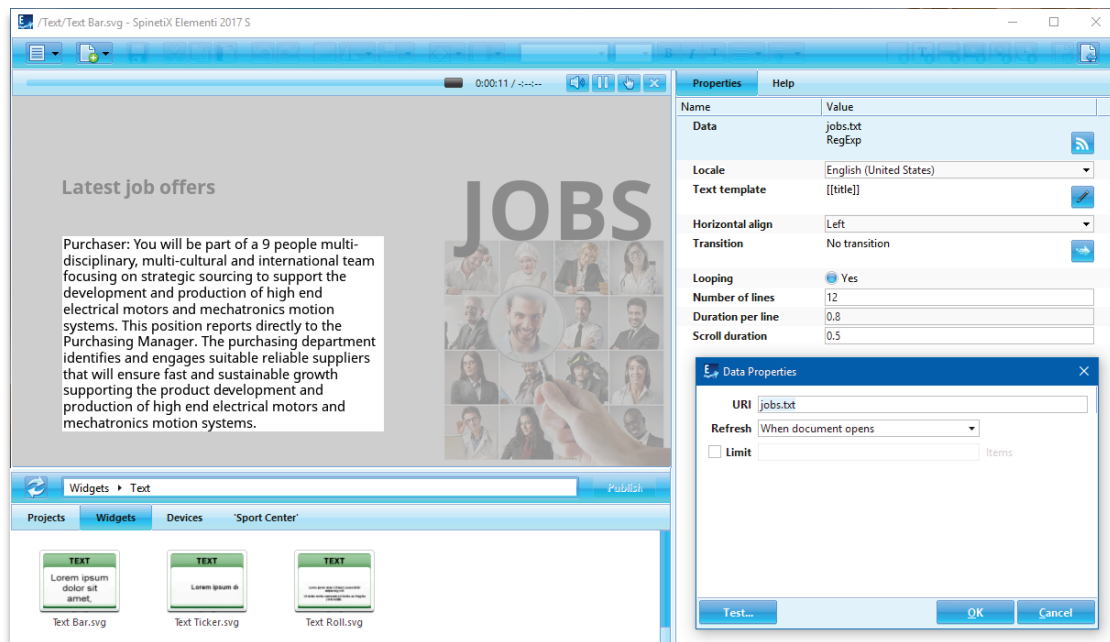
1. Click on this button ,
2. Enter the URI from where the data is retrieved,
3. Customize further depending on your needs.

Tech Support

Learn more about RSS widgets: support.spinetix.com/wiki/RSS_widgets.

Text Widgets

Text widgets enable users to display information, notifications, a description, etc. in text form.



Text Widgets' Selection

There are three Text widgets to choose from: **Text Bar**, **Text Ticker**, and **Text Roll**.


Editing Text Widgets

To edit, simply drag and drop the selected widget to a layout, a playlist or a schedule. The selected widget will be automatically copied into the current project. The text can be easily stylized, as well as animated.

Text Properties

The most common channels for Text widgets are files created with TextPad or Notepad.

To setup the widget:

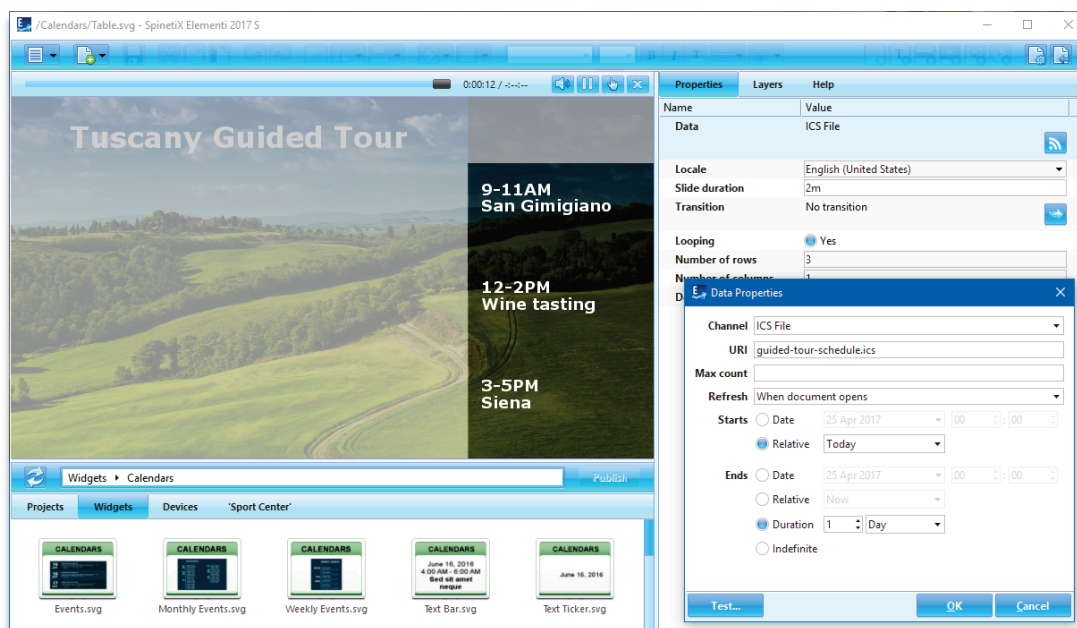
1. Click on this button ,
2. Enter the URI from where the data is retrieved,
3. Customize further depending on your needs.

Tech Support

Learn more about Text widgets: support.spinetix.com/wiki/Text_file_widgets.

Calendar Widgets

Calendar widgets enable users to display schedules for events like meetings, room bookings, classes, etc.



Calendar Widgets' Selection

There are many Calendar widgets to choose from: Text Bar, Text Ticker, Text Roll, Slideshow, Table, as well as a number of Blue Pack widgets (see p15).


Editing Calendar Widgets

To edit, simply drag and drop the selected widget to a layout, a playlist or a schedule. The selected widget will be automatically copied into the current project. Calendar widgets can be easily stylized.

Calendar Properties

The most common channels for Calendar widgets are Microsoft Outlook, ICS files (designed to work with Google and Apple calendars), Google Calendar, Outlook Online, and Facebook events.

To setup the widget:

1. Click on this button ,
2. Select the channel - please note that to use Google Calendar, Outlook Online, or Facebook events, you would need to connect your Google, Microsoft, and/or Facebook account via Cockpit which takes just a minute or two, and is done only once,
3. Customize further depending on your needs.

Tech Support

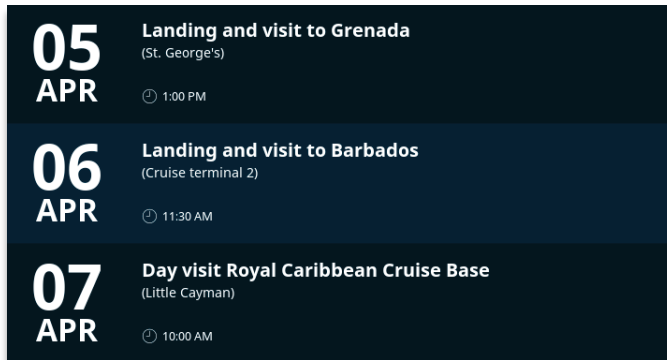
Learn more about Calendar widgets: support.spinetix.com/wiki/Calendar_widgets.

Blue Pack Calendar Widgets

You can readily customize and use Blue Pack widgets in your project. There are three Blue Pack Calendar widgets to choose from: **Events**, **Monthly Events** and **Weekly Events**.

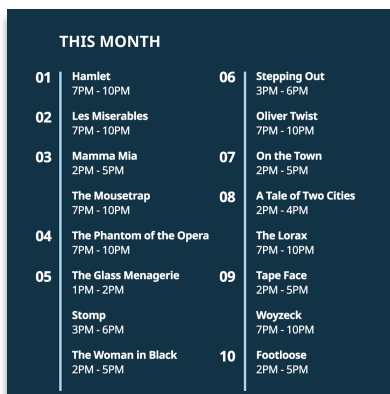
Events

Display a set of events in a configurable table layout.



Monthly Events

Display all the events of the current month, grouped by day.



Weekly Events

Display all the events of the current week, grouped by day.



Media Widgets

Media widgets enable users to automatically display media such as images and/or videos.



Media Widgets' Selection

There are many Media widgets to choose from: **Media Playlist**, **Media Crawler**, **Slideshow**, **Table Advanced**, and **Table Horizontal**.


Editing Media Widgets

To edit, simply drag and drop the selected widget to a layout, a playlist or a schedule. The selected widget will be automatically copied into the current project.

Media Properties

The Channels for Media widgets can be local (included in a project), or remote (located on a server, including OneDrive folders, Facebook albums, Flickr and Instagram).

To setup the widget:

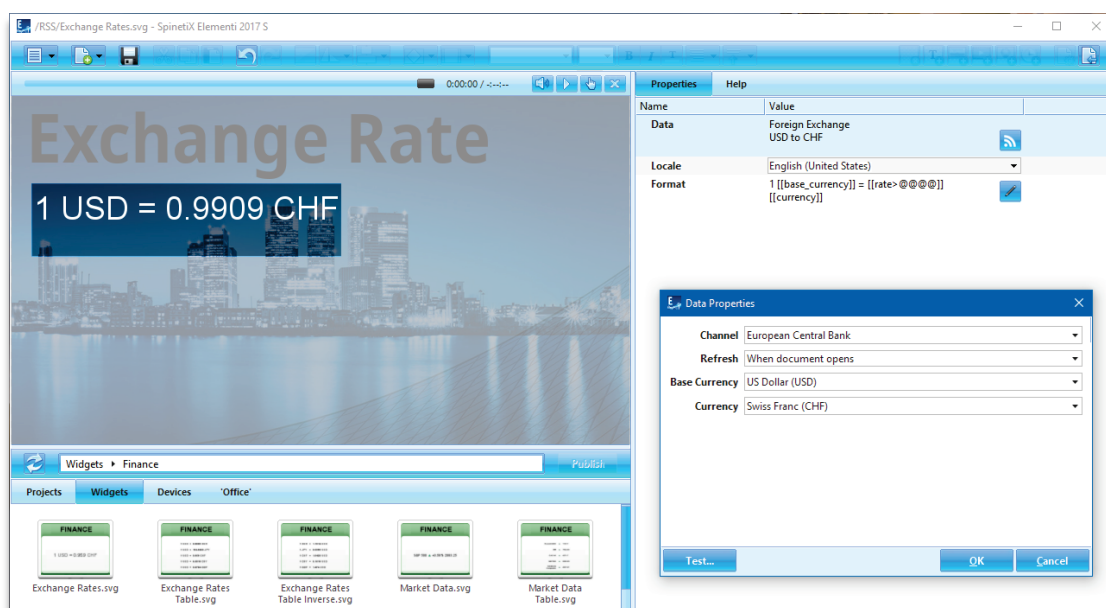
1. Click on this button ,
2. Select the channel - please note that to use OneDrive folders, Facebook albums, Flickr and Instagram, you would need to connect your Microsoft, Facebook, Flickr, or Instagram account via Cockpit which takes just a minute or two, and is done only once,
3. Customize further depending on your needs.

Tech Support

Learn more about Media widgets: support.spinetix.com/wiki/Media_files_widgets.

Finance Widgets

Finance widgets enable users to automatically display financial data such as exchange rates, market data, etc.



Finance Widgets' Selection


There are many Finance widgets to choose from: Exchange Rate, Exchange Rate Table, Exchange Rate Table Inverse, Market Data, and Market Data Table.

Editing Finance Widgets

To edit, simply drag and drop the selected widget to a layout, a playlist or a schedule. The selected widget will be automatically copied into the current project.

Finance Properties

To setup the widget:

1. Click on this button ,
2. Chose the financial channel,
3. Customize further depending on your needs.

Please note that financial data is provided by third-parties, and therefore falls under their respective terms and conditions.

Tech Support

Learn more about Finance widgets: support.spinetix.com/wiki/Finance_widgets.

Weather Widgets

The Weather widgets enable users to automatically display data such as current weather, weather forecast, etc.



Weather Widgets' Selection


There are three Weather widgets to choose from: **Current Weather**, **Weather Forecast Horizontal**, and **Weather Forecast Vertical**.

Editing Weather Widgets

To edit, simply drag and drop the selected widget to a layout, a playlist or a schedule. The selected widget will be automatically copied into the current project.

Weather Properties

To setup the widget:

1. Click on this button ,
2. Chose the weather channel (two free of charge, and two fee-based channels available),
3. Search for a city and customize further depending on your needs.

Please note that weather data is provided by third-parties, and therefore falls under their respective terms and conditions.

Tech Support

Learn more about the Weather widgets: support.spinetix.com/wiki/Weather_widgets.

Support

SpinetiX provides the following Elementi widgets support:

Support Wiki

Elementi widgets Wiki support is available under support.spinetix.com/wiki/widgets.

Video Tutorials

Elementi widgets video tutorials are made available under the respective widget pages.