

K Plus Series

K1.9 Plus / K2.5 Plus / K2.9 Plus /
K2.9D Plus / K3 Plus / K3D Plus



Slim Design, Contracted Beauty

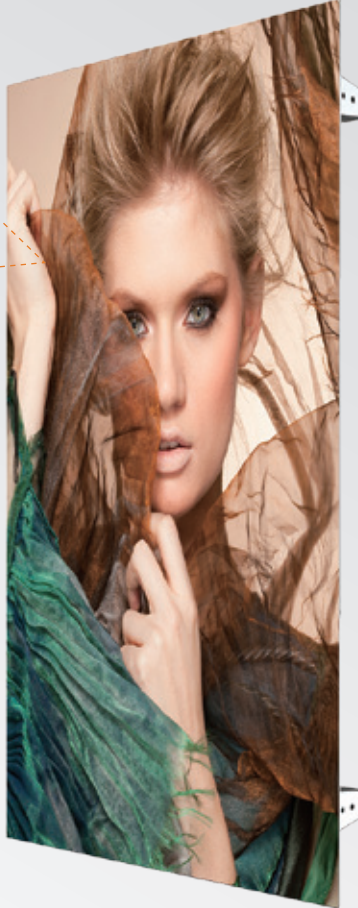
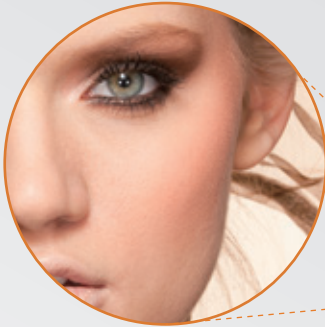
11 kg







62.5 mm



Small Spacing LED, HD, Noise Free



-  Lighter/Thinner
-  High contrast ratio & resolution
-  Both front & rear installation and maintenance
-  Non-fan, mute design

Installation & Maintenance



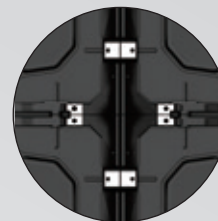
Front Install Screw through whole,
240*70 connection strap



Front Install Screw
between boxes



Rear screw hole



Rear Install Screw



Applications



Parameters	K1.9 Plus	K2.5 Plus	K2.9 Plus	K2.9D Plus	K3 Plus	K3D Plus	Unit
Pixel Pitch	1.95	2.5	2.97		3.9		mm
Pixel Type	Black SMD 1415	Black SMD 2121		SMD 1921	Black SMD 2121	SMD 1921	
Brightness	700~800		700	3,000	700	3,000	nit
Fresh Rate	1920~3840		3840		1920		Hz
Color Gray Scale	8192~16384		16384		16384		level
Contrast Ratio	3,000:1	5,000:1	4,000:1		4,500:1	4,000:1	-
Power Consumption(Max./Avg.)	480/160	450/150	300/100	420/140	270/90	390/130	W/m ²
Viewing Angle(H/V)	160/160		140/140	140/120	140/140	140/120	°c
Panel Dimensions	500×1000×62.5		500x1000x62.5		500x1000x62.5		Millimeter
Pixel Per Panel	256x512	200x400	168X336	168X336	128×256	128×256	-
Module Dimensions	250x250		250X250		250X250		Millimeter
Panel Weight	11		11		11		Kg
Panel Material	Die-casting Aluminium		Die-casting Aluminium		Die-casting Aluminium		-
IP Rating	IP40/IP21		IP40/IP21		IP40/IP21		-
Operating Temperature	-10~+40		- 10~+40		- 10~+40		°c

★ Shenzhen Absen Optoelectronic Co., Ltd. reserves the right to modify product design, specifications, and parameters without further notice.
Photos are used for illustration purpose only as products may differ from these photos. All rights reserved by Shenzhen Absen Optoelectronic Co., Ltd.

Shenzhen Absen Optoelectronic Co.,Ltd

18-20F Building 3A, Cloud Park, Bantian Huawei Base,
Longgang District Shenzhen, 518129, P.R.China
T: +86-755-89747399 E: absen@absen.com
F: +86-755-89747599 W: www.absen.com

Absen Inc.

7120 Lake Ellenor Drive Orlando,
Florida 32809, USA
T: +1-407-203-8870 E: info@usabsen.com
F: +1-407-203-8873 W: www.usabsen.com

Absen GmbH

Eisenstraße 5, 65428 Rüsselsheim a.M.,
Germany
T: +49 (0) 6142 78935-0 E: europe@absen.com
F: +49 (0) 6142 78935-29 W: www.absen-europe.com